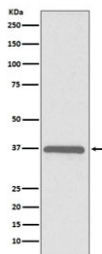


## ERCC1 Antibody [clone AOFA-5] (RQ5198)

Catalog No.	Formulation	Size
RQ5198	Antibody in PBS with 0.02% sodium azide, 50% glycerol and 0.4-0.5mg/ml BSA	100 ul

[Bulk quote request](#)

<b>Availability</b>	1-2 weeks
<b>Species Reactivity</b>	Human
<b>Format</b>	Purified
<b>Host</b>	Rabbit
<b>Clonality</b>	Rabbit Monoclonal
<b>Isotype</b>	Rabbit IgG
<b>Clone Name</b>	AOFA-5
<b>Purity</b>	Affinity purified
<b>UniProt</b>	P07992
<b>Applications</b>	Western Blot : 1:500-1:2000
<b>Limitations</b>	This ERCC1 antibody is available for research use only.



Western blot testing of human HeLa cell lysate with ERCC1 antibody. Predicted molecular weight ~36 kDa.

### Description

The product of this gene functions in the nucleotide excision repair pathway, and is required for the repair of DNA lesions such as those induced by UV light or formed by electrophilic compounds including cisplatin. The encoded protein forms a heterodimer with the XPF endonuclease (also known as ERCC4), and the heterodimeric endonuclease catalyzes the 5' incision in the process of excising the DNA lesion. The heterodimeric endonuclease is also involved in recombinational DNA repair and in the repair of inter-strand crosslinks. Mutations in this gene result in cerebrooculofacioskeletal syndrome, and polymorphisms that alter expression of this gene may play a role in carcinogenesis. [RefSeq]

For broader detection of ERCC1 as a DNA repair marker, see our [ERCC1 antibody](#).

## Application Notes

Optimal dilution of the ERCC1 antibody should be determined by the researcher.

## Immunogen

A synthetic peptide specific to human ERCC1 was used as the immunogen for the ERCC1 antibody.

## Storage

Store the ERCC1 antibody at -20oC.