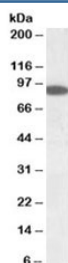


## ERC1 Antibody (R36372)

Catalog No.	Formulation	Size
R36372-100UG	0.5 mg/ml in 1X TBS, pH7.3, with 0.5% BSA (US sourced) and 0.02% sodium azide	100 ug

[Bulk quote request](#)

Availability	1-3 business days
Species Reactivity	Human
Predicted Reactivity	Cow, Dog, Mouse, Rat
Format	Antigen affinity purified
Host	Goat
Clonality	Polyclonal (goat origin)
Isotype	Goat Ig
Purity	Antigen affinity
UniProt	Q8IUD2
Gene ID	23085
Applications	Western Blot : 0.1-0.3ug/ml ELISA (peptide) LOD : 1:128000
Limitations	This ERC1 antibody is available for research use only.



Western blot testing of human pancreas lysate with ERC1 antibody at 0.1ug/ml.  
Predicted molecular weight: ~82kDa (corresponding to isoform 5).

## Description

Additional name(s) for this target protein: ELKS/RAB6-interacting/CAST family member 1

## Application Notes

Optimal dilution of the ERC1 antibody should be determined by the researcher.

1. ERC1 has five isoforms of molecular weights: 128/114/125/109/82kDa (isoforms 1/2/3/4/5).

## Immunogen

Amino acids YGSARSVGKVEPS were used as the immunogen for this ERC1 antibody. This sequence is common to isoforms 1-5.

## Storage

Aliquot and store the ERC1 antibody at -20oC.