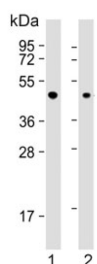


ErbB3-binding protein 1 Antibody / EBP1 / PA2G4 (F54780)

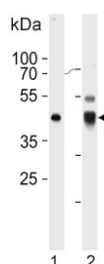
Catalog No.	Formulation	Size
F54780-0.4ML	In 1X PBS, pH 7.4, with 0.09% sodium azide	0.4 ml
F54780-0.08ML	In 1X PBS, pH 7.4, with 0.09% sodium azide	0.08 ml

[Bulk quote request](#)

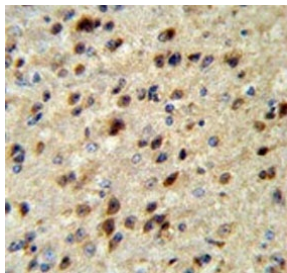
Availability	1-3 business days
Species Reactivity	Human, Mouse
Format	Purified
Clonality	Polyclonal (rabbit origin)
Isotype	Rabbit Ig
Purity	Purified
UniProt	Q9UQ80
Localization	Cytoplasmic, nuclear
Applications	Western Blot : 1:500-1:1000 Flow Cytometry : 1:25 (1x10e6 cells) Immunohistochemistry (FFPE) : 1:25
Limitations	This ErbB3-binding protein 1 antibody is available for research use only.



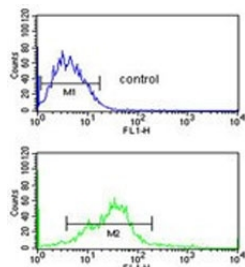
Western blot testing of human 1) A431 and 2) Jurkat cell lysate with ErbB3-binding protein 1 antibody. Predicted molecular weight ~44 kDa.



Western blot testing of 1) human Jurkat and 2) mouse NIH 3T3 cell lysate with ErbB3-binding protein 1 antibody. Predicted molecular weight ~44 kDa.



IHC testing of FFPE mouse brain tissue with ErbB3-binding protein 1 antibody. HIER: steam section in pH6 citrate buffer for 20 min and allow to cool prior to staining.



Flow cytometry testing of human MCF7 cells with ErbB3-binding protein 1 antibody; Blue=isotype control, Green= ErbB3-binding protein 1 antibody.

Description

PA2G4 is an RNA-binding protein that is involved in growth regulation. This protein is present in pre-ribosomal ribonucleoprotein complexes and may be involved in ribosome assembly and the regulation of intermediate and late steps of rRNA processing. This protein can interact with the cytoplasmic domain of the ErbB3 receptor and may contribute to transducing growth regulatory signals. This protein is also a transcriptional co-repressor of androgen receptor-regulated genes and other cell cycle regulatory genes through its interactions with histone deacetylases. This protein has been implicated in growth inhibition and the induction of differentiation of human cancer cells.

Application Notes

The stated application concentrations are suggested starting points. Titration of the ErbB3-binding protein 1 antibody may be required due to differences in protocols and secondary/substrate sensitivity.

Immunogen

A portion of amino acids 322-350 from the human protein was used as the immunogen for the ErbB3-binding protein 1 antibody.

Storage

Aliquot the ErbB3-binding protein 1 antibody and store frozen at -20oC or colder. Avoid repeated freeze-thaw cycles.