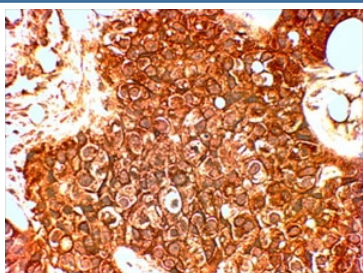


ERBB2 Antibody (R36208)

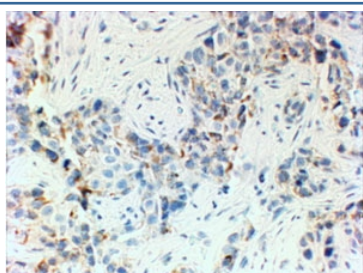
Catalog No.	Formulation	Size
R36208-100UG	0.5 mg/ml in 1X TBS, pH7.3, with 0.5% BSA (US sourced) and 0.02% sodium azide	100 ug

[Bulk quote request](#)

Availability	1-3 business days
Species Reactivity	Human
Format	Antigen affinity purified
Clonality	Polyclonal (goat origin)
Isotype	Goat Ig
Purity	Antigen affinity
Gene ID	2064
Applications	Immunohistochemistry (FFPE) : 4-6ug/ml ELISA (peptide) LOD : 1:128000
Limitations	This ERBB2 antibody is available for research use only.



IHC staining of HER+ FFPE human breast cancer with HER2 antibody at 4ug/ml. HIER: Steamed with pH6 citrate buffer, HRP-staining.



IHC: No staining of FFPE human breast cancer (triple negative/TNBC) seen with HER2 antibody at 4ug/ml. HIER: Steamed with pH6 citrate buffer, HRP-staining.

Description

Additional name(s) for this target protein: V-erb-b2 erythroblastic leukemia viral oncogene homolog 2, HER2, Herstatin, NEU, CD340

Application Notes

Optimal dilution of the ERBB2 antibody should be determined by the researcher.

Immunogen

Amino acids TLIDTNRSRACHP were used as the immunogen for this ERBB2 antibody. The amino acid sequence used as immunogen is from the extracellular portion of the protein.

Storage

Aliquot and store the ERBB2 antibody at -20oC.