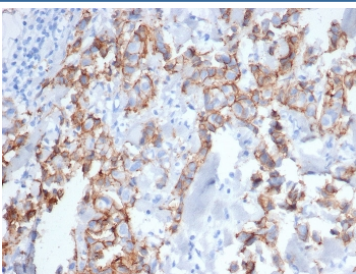


## ErbB2 Antibody / HER2 / Extracellular region [clone ERBB2/6637] (V4468)

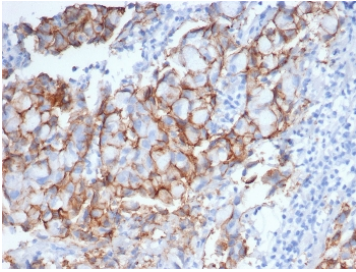
Catalog No.	Formulation	Size
V4468-100UG	0.2 mg/ml in 1X PBS with 0.1 mg/ml BSA (US sourced), 0.05% sodium azide	100 ug
V4468-20UG	0.2 mg/ml in 1X PBS with 0.1 mg/ml BSA (US sourced), 0.05% sodium azide	20 ug
V4468SAF-100UG	1 mg/ml in 1X PBS; BSA free, sodium azide free	100 ug

[Bulk quote request](#)

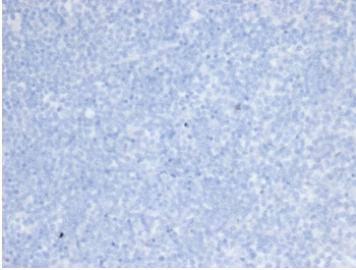
<b>Availability</b>	1-3 business days
<b>Species Reactivity</b>	Human
<b>Format</b>	Purified
<b>Host</b>	Mouse
<b>Clonality</b>	Monoclonal (mouse origin)
<b>Isotype</b>	Mouse IgG2b, kappa
<b>Clone Name</b>	ERBB2/6637
<b>Purity</b>	Protein A/G affinity
<b>UniProt</b>	P04626
<b>Localization</b>	Cell Surface
<b>Applications</b>	Immunohistochemistry (FFPE) : 1-2ug/ml for 30 minutes at RT
<b>Limitations</b>	This ErbB2 antibody is available for research use only.



IHC staining of FFPE human breast carcinoma tissue stained with ErbB2 antibody (clone ERBB2/6637) at 2ug/ml. HIER: boil tissue sections in pH 9 10mM Tris with 1mM EDTA for 20 min and allow to cool before testing.



IHC staining of FFPE human breast carcinoma tissue stained with ErbB2 antibody (clone ERBB2/6637) at 2ug/ml. HIER: boil tissue sections in pH 9 10mM Tris with 1mM EDTA for 20 min and allow to cool before testing.



Negative control: IHC testing of FFPE human brain tissue with ErbB2 antibody (clone ERBB2/6637) at 2ug/ml. HIER: boil tissue sections in pH 9 10mM Tris with 1mM EDTA for 20 min and allow to cool before testing.

## Description

Recognizes a protein of 185kDa, which is identified as c-erbB-2/HER-2/neu. Its epitope is localized in the extracellular domain. C-erbB-2/HER-2 is a member of the EGFR family. This mAb is specific and shows minimal cross-reaction with other members of the EGFR-family. Receptors of this family are located on the plasma membrane and consist of an extracellular ligand-binding domain that is connected to a large intracellular domain by a single transmembrane sequence. c-erbB-2/HER-2 protein is over-expressed in a variety of carcinomas especially those of breast and ovary.

## Application Notes

Optimal dilution of the ErbB2 antibody should be determined by the researcher.

## Immunogen

Recombinant protein encoding the extracellular domain of the human protein was used as the immunogen for the ErbB2 antibody.

## Storage

Aliquot the ErbB2 antibody and store frozen at -20oC or colder. Avoid repeated freeze-thaw cycles.