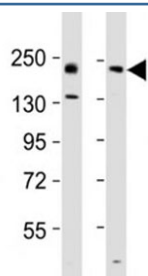


ErbB2 Antibody (F53251)

Catalog No.	Formulation	Size
F53251-0.4ML	In 1X PBS, pH 7.4, with 0.09% sodium azide	0.4 ml
F53251-0.08ML	In 1X PBS, pH 7.4, with 0.09% sodium azide	0.08 ml

[Bulk quote request](#)

Availability	1-3 business days
Species Reactivity	Mouse, Rat
Format	Antigen affinity purified
Host	Rabbit
Clonality	Polyclonal (rabbit origin)
Isotype	Rabbit Ig
Purity	Antigen affinity
UniProt	P70424
Applications	Western Blot : 1:2000
Limitations	This ErbB2 antibody is available for research use only.



ErbB2 Antibody Ovary and Lung WB. Western blot testing of ErbB2 antibody at 1:2000 dilution. Lane 1: mouse ovary lysate; 2: rat lung lysate; Predicted band size : 139 kDa.

Description

Protein tyrosine kinase that is part of several cell surface receptor complexes, but that apparently needs a coreceptor for ligand binding. Essential component of a neuregulin-receptor complex, although neuregulins do not interact with it alone. GP30 is a potential ligand for this receptor. Regulates outgrowth and stabilization of peripheral microtubules (MTs). Upon ERBB2 activation, the MEMO1-RHOA-DIAPH1 signaling pathway elicits the phosphorylation and thus the inhibition of GSK3B at cell membrane. This prevents the phosphorylation of APC and CLASP2, allowing its association with the cell membrane. In turn, membrane-bound APC allows the localization of MACF1 to the cell membrane, which is required for microtubule capture and stabilization (By similarity).

For broad detection of HER2 (ErbB2) as a receptor tyrosine kinase, see our [HER2 antibody](#).

Application Notes

Titration of the Erbb2 antibody may be required due to differences in protocols and secondary/substrate sensitivity.

Immunogen

This mouse Erbb2 antibody was produced from a rabbit immunized with a KLH conjugated synthetic peptide between 1236-1268 amino acids from the mouse Erbb2.

Storage

Aliquot the Erbb2 antibody and store frozen at -20oC or colder. Avoid repeated freeze-thaw cycles.