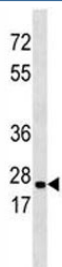


ERAB Antibody / HSD17B10 (F40078)

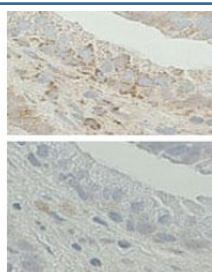
Catalog No.	Formulation	Size
F40078-0.4ML	In 1X PBS, pH 7.4, with 0.09% sodium azide	0.4 ml
F40078-0.08ML	In 1X PBS, pH 7.4, with 0.09% sodium azide	0.08 ml

[Bulk quote request](#)

Availability	1-3 business days
Species Reactivity	Human, Mouse
Predicted Reactivity	Bovine, Rat
Format	Antigen affinity purified
Host	Rabbit
Clonality	Polyclonal (rabbit origin)
Isotype	Rabbit Ig
Purity	Antigen affinity
UniProt	Q6IBS9
Applications	Western Blot : 1:1000 IHC (Paraffin) : 1:50-1:100
Limitations	This ERAB antibody is available for research use only.



ERAB antibody western blot analysis in 293 lysate



IHC analysis of FFPE human prostate tissue. (Top) Staining with the ERAB antibody at a 1:20 concentration. (Bottom) Staining is blocked with the immunizing peptide. Data and protocol courtesy of Marie-Helene Levesque, Centre de Recherche du CHUL, Canada.

Description

Endoplasmic Reticulum Amyloid Binding protein is a member of the family of short chain dehydrogenase/reductases; unique among this family, it binds amyloid b-peptide and exhibits enzymatic activity toward a wide variety of substrates including linear alcohols. In an amyloid beta-abundant environment, ERAB appears to trigger cell stress induced by the amyloid peptide.

Application Notes

Titration of the ERAB antibody may be required due to differences in protocols and secondary/substrate sensitivity.

Immunogen

A portion of amino acids 199-235 from the human protein was used as the immunogen for this ERAB antibody.

Storage

Aliquot the ERAB antibody and store frozen at -20oC or colder. Avoid repeated freeze-thaw cycles.