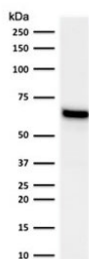


## ER alpha Antibody [clone NR3Ga-2] (V3836)

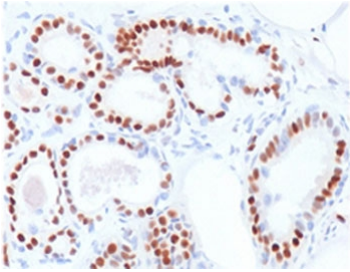
Catalog No.	Formulation	Size
V3836-100UG	0.2 mg/ml in 1X PBS with 0.1 mg/ml BSA (US sourced) and 0.05% sodium azide	100 ug
V3836-20UG	0.2 mg/ml in 1X PBS with 0.1 mg/ml BSA (US sourced) and 0.05% sodium azide	20 ug
V3836SAF-100UG	1 mg/ml in 1X PBS; BSA free, sodium azide free	100 ug

[Bulk quote request](#)

<b>Availability</b>	1-3 business days
<b>Species Reactivity</b>	Human
<b>Format</b>	Purified
<b>Host</b>	Mouse
<b>Clonality</b>	Monoclonal (mouse origin)
<b>Isotype</b>	Mouse IgG2a, kappa
<b>Clone Name</b>	NR3Ga-2
<b>Purity</b>	Protein G affinity chromatography
<b>UniProt</b>	P03372
<b>Localization</b>	Nuclear
<b>Applications</b>	Western Blot : 1-2ug/ml Immunohistochemistry (FFPE) : 1-2ug/ml for 30 min at RT
<b>Limitations</b>	This ER alpha antibody is available for research use only.



Western blot testing of human MCF-7 lysate with Estrogen Receptor alpha antibody (clone NR3Ga-2). Expected molecular weight ~67 kDa.



IHC testing of human breast carcinoma stained with ER alpha antibody (clone NR3Ga-2). Staining of formalin-fixed tissues requires boiling tissue sections in pH 9 10mM Tris with 1mM EDTA for 10-20 min followed by cooling at RT for 20 minutes.

## Description

Estrogen receptor (ER) is an important regulator of growth and differentiation in the mammary gland. ER presence in breast tumors indicates an increased likelihood of response to anti-estrogen therapy.

For comprehensive detection of Estrogen receptor alpha across hormone signaling and breast cancer studies, see our [Estrogen Receptor alpha antibody \(clone ESR1/3557\)](#).

## Application Notes

The optimal dilution of the ER alpha antibody for each application should be determined by the researcher.

## Immunogen

Full length human protein was used as the immunogen for this ER alpha antibody.

## Storage

Store the ER alpha antibody at 2-8oC (with azide) or aliquot and store at -20oC or colder (without azide).