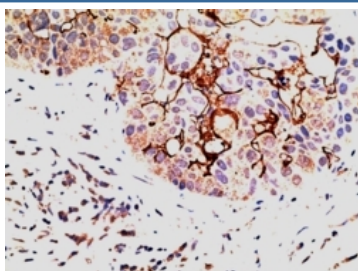


EPS8 Antibody (R35911)

Catalog No.	Formulation	Size
R35911-100UG	0.5 mg/ml in 1X TBS, pH7.3, with 0.5% BSA (US sourced) and 0.02% sodium azide	100 ug

Bulk quote request

Availability	1-3 business days
Species Reactivity	Human
Predicted Reactivity	Dog, Mouse, Pig, Rat
Format	Antigen affinity purified
Clonality	Polyclonal (goat origin)
Isotype	Goat Ig
Purity	Antigen affinity
Gene ID	2059
Applications	Immunohistochemistry (FFPE) : 5-10ug/ml ELISA (peptide) LOD : 1:8000
Limitations	This EPS8 antibody is available for research use only.



IHC testing of FFPE human breast carcinoma with EPS8 antibody at 5ug/ml. HIER: steamed with pH6 citrate buffer, AP-staining.

Description

Additional name(s) for this target protein: Epidermal growth factor receptor pathway substrate 8

Application Notes

Optimal dilution of the EPS8 antibody should be determined by the researcher.

Immunogen

Amino acids SGVESFDEGSSH were used as the immunogen for this EPS8 antibody.

Storage

Aliquot and store the EPS8 antibody at -20oC.