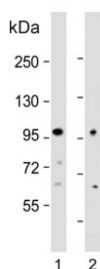


## EPS8 Antibody (F54257)

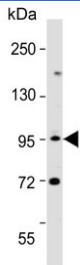
Catalog No.	Formulation	Size
F54257-0.4ML	In 1X PBS, pH 7.4, with 0.09% sodium azide	0.4 ml
F54257-0.08ML	In 1X PBS, pH 7.4, with 0.09% sodium azide	0.08 ml

[Bulk quote request](#)

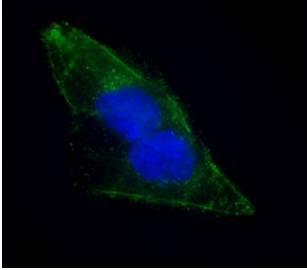
<b>Availability</b>	1-3 business days
<b>Species Reactivity</b>	Human
<b>Format</b>	Purified
<b>Host</b>	Rabbit
<b>Clonality</b>	Polyclonal (rabbit origin)
<b>Isotype</b>	Rabbit Ig
<b>Purity</b>	Antigen affinity purified
<b>UniProt</b>	Q12929
<b>Gene ID</b>	2059
<b>Localization</b>	Cytoplasmic
<b>Applications</b>	Western Blot : 1:1000-1:2000 Immunohistochemistry (FFPE) : 1:50-1:100 Flow Cytometry : 1:25 (1x10 <sup>6</sup> cells) Immunofluorescence : 1:25
<b>Limitations</b>	This EPS8 antibody is available for research use only.



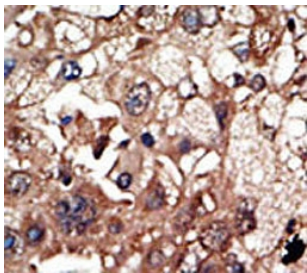
Western blot testing of human 1) A549 and 2) LOVO cell lysate with EPS8 antibody.  
Expected molecular weight: 92-97 kDa.



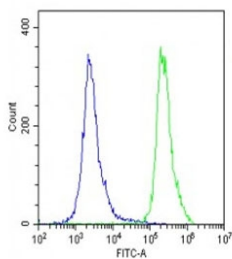
Western blot testing of human HeLa cell lysate with EPS8 antibody. Expected molecular weight: 92-97 kDa.



Immunofluorescent staining of fixed and permeabilized human U-2 OS cells with EPS8 antibody (green) and DAPI nuclear stain (blue).



IHC testing of FFPE human cancer tissue with EPS8 antibody. HIER: steam section in pH6 citrate buffer for 20 min and allow to cool prior to staining.



Flow cytometry testing of fixed and permeabilized human U-2 OS cells with EPS8 antibody; Blue=isotype control, Green= EPS8 antibody.

## Description

Upon binding to EGF receptor, EPS8 enhances EGF-dependent mitogenic signals. It can bind multiple cellular targets. EPS8 is expressed in all tissues analyzed, including heart, brain, placenta, lung, liver, skeletal muscle, kidney, and pancreas. It is expressed in all epithelial and fibroblastic lines examined and in some, but not all, hematopoietic cells. EPS8 is phosphorylated by several receptor tyrosine kinases. The protein contains 1 PH domain and 1 SH3 domain.

## Application Notes

The stated application concentrations are suggested starting points. Titration of the EPS8 antibody may be required due to differences in protocols and secondary/substrate sensitivity.

## Immunogen

A portion of amino acids 9-39 from the human protein were used as the immunogen for the EPS8 antibody.

## Storage

Aliquot the EPS8 antibody and store frozen at -20°C or colder. Avoid repeated freeze-thaw cycles.

