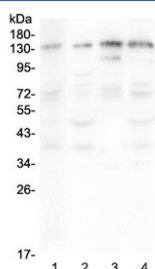


## EPS15 Antibody / Epidermal growth factor receptor substrate 15 (RQ4325)

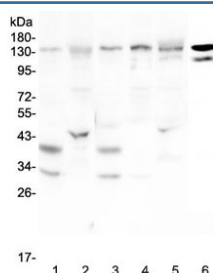
Catalog No.	Formulation	Size
RQ4325	0.5mg/ml if reconstituted with 0.2ml sterile DI water	100 ug

**Bulk quote request**

<b>Availability</b>	1-3 business days
<b>Species Reactivity</b>	Human, Mouse, Rat
<b>Format</b>	Antigen affinity purified
<b>Clonality</b>	Polyclonal (rabbit origin)
<b>Isotype</b>	Rabbit IgG
<b>Purity</b>	Antigen affinity purified
<b>Buffer</b>	Lyophilized from 1X PBS with 2% Trehalose and 0.025% sodium azide
<b>UniProt</b>	P42566
<b>Localization</b>	Cytoplasm, cell membrane
<b>Applications</b>	Western Blot : 0.5-1ug/ml Direct ELISA : 0.1-0.5ug/ml
<b>Limitations</b>	This EPS15 antibody is available for research use only.



Western blot testing of human 1) A375, 2) HepG2, 3) Jurkat and 4) PANC-1 lysate with EPS15 antibody at 0.5ug/ml. Predicted molecular weight ~99 kDa, routinely observed at 120-150 kDa.



Western blot testing of rat 1) brain, 2) liver and mouse 3) brain, 4) spleen, 5) liver and 6) testis lysate with EPS15 antibody at 0.5ug/ml. Predicted molecular weight ~99 kDa, routinely observed at 120-150 kDa.

## Description

Epidermal growth factor receptor substrate 15 is a protein that in humans is encoded by the EPS15 gene. This gene encodes a protein that is part of the EGFR pathway. The protein is present at clatherin-coated pits and is involved in receptor-mediated endocytosis of EGF. Notably, this gene is rearranged with the HRX/ALL/MLL gene in acute myelogenous leukemias. Alternative splicing results in multiple transcript variants encoding distinct isoforms.

## Application Notes

Optimal dilution of the EPS15 antibody should be determined by the researcher.

## Immunogen

A recombinant human protein corresponding to amino acids A2-E88 was used as the immunogen for the EPS15 antibody.

## Storage

After reconstitution, the EPS15 antibody can be stored for up to one month at 4°C. For long-term, aliquot and store at -20°C. Avoid repeated freezing and thawing.