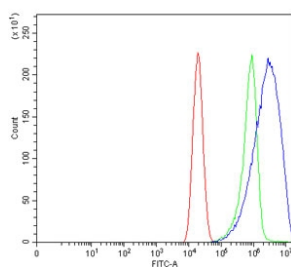


## EPRS1 Antibody / Proline--tRNA ligase [clone 12B5B3] (RQ6742)

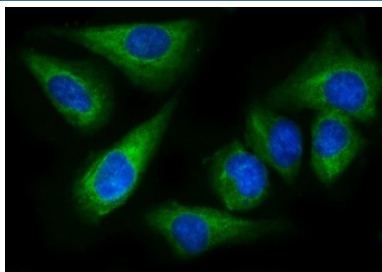
Catalog No.	Formulation	Size
RQ6742	0.5mg/ml if reconstituted with 0.2ml sterile DI water	100 ug

**Bulk quote request**

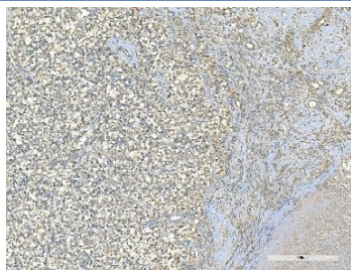
<b>Availability</b>	1-3 business days
<b>Species Reactivity</b>	Human
<b>Format</b>	Purified
<b>Clonality</b>	Monoclonal (mouse origin)
<b>Isotype</b>	Mouse IgG2b
<b>Clone Name</b>	12B5B3
<b>Purity</b>	Affinity purified
<b>Buffer</b>	Lyophilized from 1X PBS with 2% Trehalose
<b>UniProt</b>	P07814
<b>Localization</b>	Cytoplasmic
<b>Applications</b>	Western Blot : 1-2ug/ml Immunohistochemistry (FFPE) : 2-5ug/ml Immunofluorescence (FFPE) : 5ug/ml Flow Cytometry : 1-3ug/million cells
<b>Limitations</b>	This EPRS1 antibody is available for research use only.



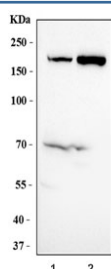
Flow cytometry testing of human Caco-2 cells with EPRS1 antibody at 1ug/million cells (blocked with goat sera); Red=cells alone, Green=isotype control, Blue= EPRS1 antibody.



Immunofluorescent staining of FFPE human U-2 OS cells with EPRS1 antibody (green) and DAPI nuclear stain (blue). HIER: steam section in pH6 citrate buffer for 20 min.



IHC staining of FFPE human testis cancer with EPRS1 antibody. HIER: boil tissue sections in pH8 EDTA for 20 min and allow to cool before testing.



Western blot testing of human 1) 293T and 2) K562 cell lysate with EPRS1 antibody. Predicted molecular weight ~171 kDa.

## Description

Bifunctional aminoacyl-tRNA synthetase is an enzyme that in humans is encoded by the EPRS gene. Aminoacyl-tRNA synthetases are a class of enzymes that charge tRNAs with their cognate amino acids. The protein encoded by this gene is a multifunctional aminoacyl-tRNA synthetase that catalyzes the aminoacylation of glutamic acid and proline tRNA species. Alternative splicing has been observed for this gene, but the full-length nature and biological validity of the variant have not been determined.

## Application Notes

Optimal dilution of the EPRS1 antibody should be determined by the researcher.

## Immunogen

Recombinant human protein (amino acids R1298-Y1512) was used as the immunogen for the EPRS1 antibody.

## Storage

After reconstitution, the EPRS1 antibody can be stored for up to one month at 4°C. For long-term, aliquot and store at -20°C. Avoid repeated freezing and thawing.

