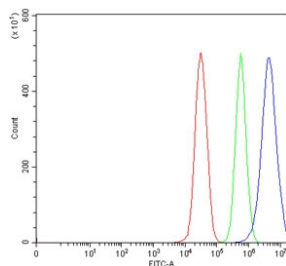


## Epoxide hydrolase Antibody / EPHX1 (RQ7293)

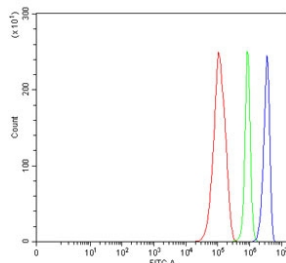
| Catalog No. | Formulation   | Size   |
|-------------|---|--------|
| RQ7293      | 0.5mg/ml if reconstituted with 0.2ml sterile DI water | 100 ug |

[Bulk quote request](#)

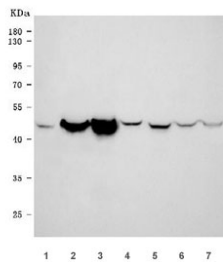
|                           |  |
|---------------------------|--|
| <b>Availability</b>       | 1-3 business days  |
| <b>Species Reactivity</b> | Human, Mouse, Rat  |
| <b>Format</b>             | Antigen affinity purified  |
| <b>Host</b>               | Rabbit   |
| <b>Clonality</b>          | Polyclonal (rabbit origin)   |
| <b>Isotype</b>            | Rabbit IgG   |
| <b>Purity</b>             | Antigen affinity purified  |
| <b>Buffer</b>             | Lyophilized from 1X PBS with 2% Trehalose  |
| <b>UniProt</b>            | P07099   |
| <b>Applications</b>       | Western Blot : 0.5-1ug/ml<br>Flow Cytometry : 1-3ug/million cells<br>Direct ELISA : 0.1-0.5ug/ml |
| <b>Limitations</b>        | This Epoxide hydrolase antibody is available for research use only.                              |



Flow cytometry testing of human 293T cells with Epoxide hydrolase antibody at 1ug/million cells (blocked with goat sera); Red=cells alone, Green=isotype control, Blue=Epoxide hydrolase antibody.



Flow cytometry testing of human RT4 cells with Epoxide hydrolase antibody at 1ug/million cells (blocked with goat sera); Red=cells alone, Green=isotype control, Blue=Epoxide hydrolase antibody.



Western blot testing of 1) human HepG2, 2) human HCCT, 3) human HCCP, 4) rat liver, 5) rat RH35, 6) mouse liver and 7) mouse HEPA1-6 cell lysate with Epoxide hydrolase antibody. Predicted molecular weight ~53 kDa.

## Description

Epoxide hydrolase 1 is an enzyme encoded by the EPHX1 gene in humans. Epoxide hydrolase is a critical biotransformation enzyme that converts epoxides from the degradation of aromatic compounds to trans-dihydrodiols which can be conjugated and excreted from the body. Epoxide hydrolase functions in both the activation and detoxification of epoxides. Mutations in this gene cause preeclampsia, epoxide hydrolase deficiency or increased epoxide hydrolase activity. Alternatively spliced transcript variants encoding the same protein have been found for this gene.

## Application Notes

Optimal dilution of the Epoxide hydrolase antibody should be determined by the researcher.

## Immunogen

Recombinant human protein (amino acids A42-Q455) was used as the immunogen for the Epoxide hydrolase antibody.

## Storage

After reconstitution, the Epoxide hydrolase antibody can be stored for up to one month at 4oC. For long-term, aliquot and store at -20oC. Avoid repeated freezing and thawing.