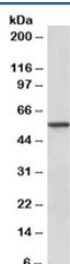


Epoxide hydrolase 2 Antibody (R36059)

Catalog No.	Formulation	Size
R36059-100UG	0.5 mg/ml in 1X TBS, pH7.3, with 0.5% BSA (US sourced) and 0.02% sodium azide	100 ug

[Bulk quote request](#)

Availability	1-3 business days
Species Reactivity	Human
Format	Antigen affinity purified
Clonality	Polyclonal (goat origin)
Isotype	Goat Ig
Purity	Antigen affinity
Gene ID	2053
Applications	Western Blot : 0.3-1ug/ml ELISA (peptide) LOD : 1:2000
Limitations	This Epoxide hydrolase 2 antibody is available for research use only.



Western blot testing of human kidney lysate with Epoxide hydrolase 2 antibody at 0.5ug/ml. Predicted molecular weight: ~63/57 kDa (isoforms 1/2).

Description

Additional name(s) for this target protein: EPHX2

Application Notes

Optimal dilution of the Epoxide hydrolase 2 antibody should be determined by the researcher.

Immunogen

Amino acids SRTFKSLFRASDES were used as the immunogen for this Epoxide hydrolase 2 antibody.

Storage

Aliquot and store the Epoxide hydrolase 2 antibody at -20oC.