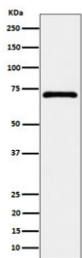


Epoxide hydrolase 2 Antibody / EPHX2 [clone 29E21] (RQ8730)

Catalog No.	Formulation	Size
RQ8730	Antibody in PBS with 0.02% sodium azide, 50% glycerol and 0.4-0.5mg/ml BSA	100 ul

[Bulk quote request](#)

Availability	1-3 days
Species Reactivity	Human
Format	Purified
Host	Rabbit
Clonality	Rabbit Monoclonal
Isotype	Rabbit IgG
Clone Name	29E21
Purity	Affinity chromatography
UniProt	P34913
Applications	Western Blot : 1:500-1:2000
Limitations	This Epoxide hydrolase 2 antibody is available for research use only.



Western blot testing of human MCF7 cell lysate with Epoxide hydrolase 2 antibody.
Predicted molecular weight ~63 kDa.

Description

Epoxide hydrolase 2 is a bifunctional enzyme. The C-terminal domain has epoxide hydrolase activity and acts on epoxides (alkene oxides, oxiranes) and arene oxides. It also plays a role in xenobiotic metabolism by degrading potentially toxic epoxides.

Application Notes

Optimal dilution of the Epoxide hydrolase 2 antibody should be determined by the researcher.

Immunogen

A synthetic peptide specific to human Epoxide hydrolase 2 protein was used as the immunogen for the Epoxide hydrolase 2 antibody.

Storage

Store the Epoxide hydrolase 2 antibody at -20oC.