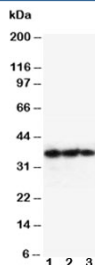


EPO Antibody / Erythropoietin (R30106)

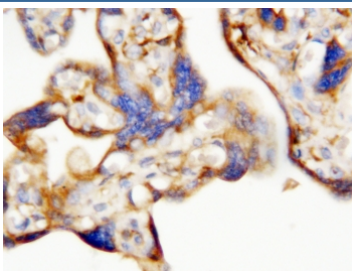
Catalog No.	Formulation	Size
R30106	0.5mg/ml if reconstituted with 0.2ml sterile DI water	100 ug

[Bulk quote request](#)

Availability	1-3 business days
Species Reactivity	Human
Format	Antigen affinity purified
Host	Rabbit
Clonality	Polyclonal (rabbit origin)
Isotype	Rabbit IgG
Purity	Antigen affinity
Buffer	Lyophilized from 1X PBS with 0.025% sodium azide
UniProt	P01588
Applications	Western Blot (recombinant Protein) : 0.5-1ug/ml IHC (FFPE) : 0.5-1ug/ml ELISA : 0.1-0.5ug/ml (human protein tested)
Limitations	This EPO antibody is available for research use only.



Western blot testing of EPO antibody and Lane 1: Recombinant human protein 10ng; 2: 5ng; 3: 2.5ng. Predicted molecular weight: 18-34 kDa depending on glycosylation level.



EPO Antibody Placenta IHC. Immunohistochemistry analysis of human placenta tissue using EPO Antibody demonstrates HRP-DAB brown cytoplasmic staining in trophoblastic cells, consistent with erythropoietin (EPO) expression as a hypoxia response hormone involved in oxygen regulation during placental development, while surrounding stromal elements show lower signal; nuclei are counterstained blue.

Description

EPO Antibody detects Erythropoietin, an acidic glycoprotein hormone with a molecular mass of 34 kD. It is a cytokine for erythrocyte (red blood cell) precursors in the bone marrow. This gene is mapped to 7q22.1. It is produced by interstitial fibroblasts in the kidney in close association with peritubular capillary and tubular epithelial cells. It is also produced in perisinusoidal cells in the liver. While liver production predominates in the fetal and perinatal period, renal production is predominant during adulthood. As the prime regulator of red cell production, its major functions are to promote erythroid differentiation and to initiate hemoglobin synthesis. It also has other known biological functions. For example, erythropoietin plays an important role in the brains response to neuronal injury. EPO is also involved in the wound healing process.

For detection of erythropoietin (EPO) as a hypoxia response hormone across tissues and conditions, see our [EPO antibody](#).

Application Notes

The stated application concentrations are suggested starting points. Titration of the EPO antibody may be required due to differences in protocols and secondary/substrate sensitivity.

Immunogen

Human partial recombinant protein (AA 1-166) was used as the immunogen for this EPO antibody.

Storage

After reconstitution, the EPO antibody can be stored for up to one month at 4oC. For long-term, aliquot and store at -20oC. Avoid repeated freezing and thawing.