

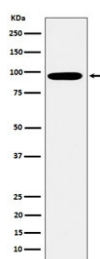
## EPN1 Antibody / Epsin 1 [clone 28E39] (RQ8358)

| Catalog No. | Formulation  | Size   |
|-------------|--|--------|
| RQ8358      | Antibody in PBS with 0.02% sodium azide, 50% glycerol and 0.4-0.5mg/ml BSA | 100 ul |

Recombinant **RABBIT MONOCLONAL**

[Bulk quote request](#)

|                    |  |
|--------------------|--|
| Availability       | 1-3 business days                                      |
| Species Reactivity | Human  |
| Format             | Purified   |
| Host               | Rabbit   |
| Clonality          | Recombinant Rabbit Monoclonal                          |
| Isotype            | Rabbit IgG   |
| Clone Name         | 28E39  |
| Purity             | Affinity chromatography                                |
| UniProt            | Q9Y6I3   |
| Applications       | Western Blot : 1:500-1:2000                            |
| Limitations        | This EPN1 antibody is available for research use only. |



Western blot testing of human K562 cell lysate with EPN1 antibody. Predicted molecular weight: 58-69 kDa (multiple isoforms).

### Description

EPN1 is an endocytic accessory protein that interacts with EPS15 (MIM 600051), the alpha subunit of the clathrin adaptor AP2 (AP2A1; MIM 601026), and clathrin (see MIM 118960), as well as with other accessory proteins for the endocytosis of clathrin-coated vesicles. [Wiki]

### Application Notes

Optimal dilution of the EPN1 antibody should be determined by the researcher.

## **Immunogen**

A synthetic peptide derived from human Epsin 1 was used as the immunogen for the EPN1 antibody.

## **Storage**

Store the EPN1 antibody at -20oC.