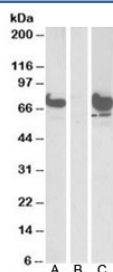


EPM2AIP1 Antibody (R36347)

Catalog No.	Formulation	Size
R36347-100UG	0.5 mg/ml in 1X TBS, pH7.3, with 0.5% BSA (US sourced) and 0.02% sodium azide	100 ug

[Bulk quote request](#)

Availability	1-3 business days
Species Reactivity	Human
Predicted Reactivity	Cow, Dog, Mouse, Rat
Format	Antigen affinity purified
Host	Goat
Clonality	Polyclonal (goat origin)
Isotype	Goat Ig
Purity	Antigen affinity
Gene ID	9852
Applications	Western Blot : 1-3ug/ml ELISA (peptide) LOD : 1:16000
Limitations	This EPM2AIP1 antibody is available for research use only.



Western blot of HEK293 lysate overexpressing human EPM2AIP1-FLAG probed with EPM2AIP1 antibody [1ug/ml] in (A) and anti-FLAG [1/1000] in (C). Mock-transfected HEK293 probed with EPM2AIP1 antibody [1ug/ml] in (B). Predicted/observed molecular weight: ~70kDa.

Description

Additional name(s) for this target protein: EPM2A (laforin) interacting protein 1

Application Notes

Optimal dilution of the EPM2AIP1 antibody should be determined by the researcher.

Immunogen

Amino acids WMTPKRSKMEVDC were used as the immunogen for this EPM2AIP1 antibody.

Storage

Aliquot and store the EPM2AIP1 antibody at -20oC.