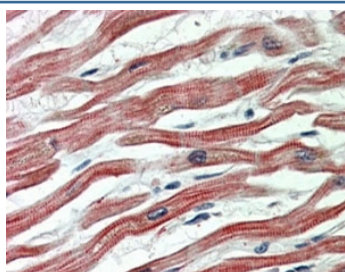


## EPM2AIP1 Antibody (R36273)

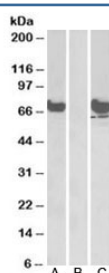
| Catalog No.  | Formulation   | Size   |
|--------------|---|--------|
| R36273-100UG | 0.5 mg/ml in 1X TBS, pH7.3, with 0.5% BSA (US sourced) and 0.02% sodium azide | 100 ug |

[Bulk quote request](#)

|                      |  |
|----------------------|--|
| Availability         | 1-3 business days  |
| Species Reactivity   | Human  |
| Predicted Reactivity | Dog, Mouse, Rat  |
| Format               | Antigen affinity purified  |
| Clonality            | Polyclonal (goat origin)   |
| Isotype              | Goat Ig  |
| Purity               | Antigen affinity   |
| Gene ID              | 9852   |
| Applications         | Western Blot : 1-3ug/ml<br>Immunohistochemistry (FFPE) : 5-10ug/ml<br>ELISA (peptide) LOD : 1:8000 |
| Limitations          | This EPM2AIP1 antibody is available for research use only.   |



IHC staining of FFPE human heart with EPM2AIP1 antibody at 5ug/ml. HIER: steamed with pH6 citrate buffer, AP-staining.



Western blot of HEK293 lysate overexpressing human EPM2AIP1-FLAG probed with EPM2AIP1 antibody [1ug/ml] in (A) and anti-FLAG [1/1000] in (C). Mock-transfected HEK293 probed with EPM2AIP1 antibody [1ug/ml] in (B). Predicted/observed molecular weight: ~70kDa.

## Description

Additional name(s) for this target protein: EPM2A interacting protein 1

## Application Notes

Optimal dilution of the EPM2AIP1 antibody should be determined by the researcher.

## Immunogen

Amino acids TRNQHTLSQPLTDEH were used as the immunogen for this EPM2AIP1 antibody.

## Storage

Aliquot and store the EPM2AIP1 antibody at -20oC.