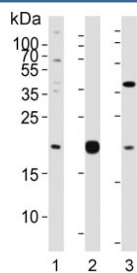


Epiregulin Antibody / EREG (F54244)

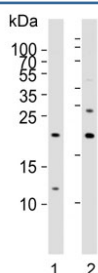
Catalog No.	Formulation	Size
F54244-0.4ML	In 1X PBS, pH 7.4, with 0.09% sodium azide	0.4 ml
F54244-0.08ML	In 1X PBS, pH 7.4, with 0.09% sodium azide	0.08 ml

[Bulk quote request](#)

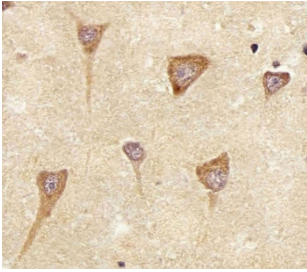
Availability	1-3 business days
Species Reactivity	Human
Format	Purified
Host	Rabbit
Clonality	Polyclonal (rabbit origin)
Isotype	Rabbit Ig
Purity	Antigen affinity purified
UniProt	O14944
Applications	Western Blot : 1:1000-1:2000 Immunohistochemistry (FFPE) : 1:25-1:50
Limitations	This Epiregulin antibody is available for research use only.



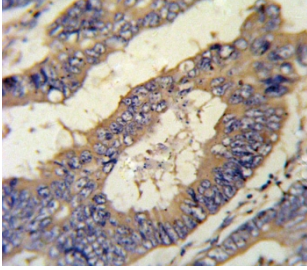
Western blot testing of human 1) A549, 2) HepG2 and 3) U-87 MG cell lysate with Epiregulin antibody. Expected molecular weight ~19 kDa.



Western blot testing of human 1) A549 and 2) placenta lysate with Epiregulin antibody. Expected molecular weight ~19 kDa.



IHC testing of FFPE human brain tissue with Epiregulin antibody. HIER: steam section in pH6 citrate buffer for 20 min and allow to cool prior to staining.



IHC testing of FFPE human colon carcinoma with Epiregulin antibody. HIER: steam section in pH6 citrate buffer for 20 min and allow to cool prior to staining.

Description

EREG is a member of the epidermal growth factor family. EREG can function as a ligand of EGFR (epidermal growth factor receptor), as well as a ligand of most members of the ERBB (v-erb-b2 oncogene homolog) family of tyrosine-kinase receptors.

Application Notes

The stated application concentrations are suggested starting points. Titration of the Epiregulin antibody may be required due to differences in protocols and secondary/substrate sensitivity.

Immunogen

A portion of amino acids 137-165 from the human protein were used as the immunogen for the Epiregulin antibody.

Storage

Aliquot the Epiregulin antibody and store frozen at -20oC or colder. Avoid repeated freeze-thaw cycles.