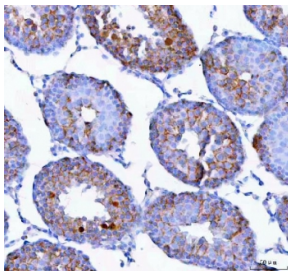


## Epigen Antibody / Epgn (R32988)

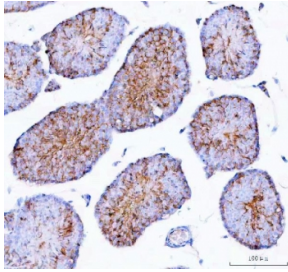
Catalog No.	Formulation	Size
R32988	0.5mg/ml if reconstituted with 0.2ml sterile DI water	100 ug

### Bulk quote request

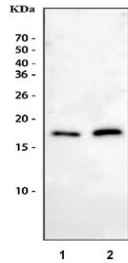
<b>Availability</b>	1-3 business days
<b>Species Reactivity</b>	Mouse, Rat
<b>Format</b>	Antigen affinity purified
<b>Host</b>	Rabbit
<b>Clonality</b>	Polyclonal (rabbit origin)
<b>Isotype</b>	Rabbit IgG
<b>Purity</b>	Antigen affinity
<b>Buffer</b>	Lyophilized from 1X PBS with 2% Trehalose
<b>UniProt</b>	Q924X1
<b>Localization</b>	Cell membrane
<b>Applications</b>	Western Blot : 0.5-1ug/ml Immunohistochemistry (FFPE) : 2-5ug/ml ELISA (recombinant Mouse Protein) : 0.1-0.5ug/ml (BSA-free format available)
<b>Limitations</b>	This Epigen antibody is available for research use only.



IHC staining of FFPE rat testis tissue with Epigen antibody. HIER: boil tissue sections in pH8 EDTA for 20 min and allow to cool before testing.



IHC staining of FFPE mouse testis tissue with Epigen antibody. HIER: boil tissue sections in pH8 EDTA for 20 min and allow to cool before testing.



Western blot testing of 1) rat brain and 2) mouse brain tissue lysate with Epigen antibody at 0.5ug/ml. Predicted molecular weight ~17 kDa.

## Description

Epigen also known as Epithelial mitogen is a protein that in humans is encoded by the EPGN gene. The protein encoded by this gene is a member of the epidermal growth factor family. Members of this family are ligands for the epidermal growth factor receptor and play a role in cell survival, proliferation and migration. This protein has been reported to have high mitogenic activity but low affinity for its receptor. Expression of this transcript and protein have been reported in cancer specimens of the breast, bladder, and prostate.

## Application Notes

Optimal dilution of the Epigen antibody should be determined by the researcher.

## Immunogen

A recombinant mouse protein corresponding to amino acids A19-K109 was used as the immunogen for the Epigen antibody.

## Storage

After reconstitution, the Epigen antibody can be stored for up to one month at 4oC. For long-term, aliquot and store at -20oC. Avoid repeated freezing and thawing.