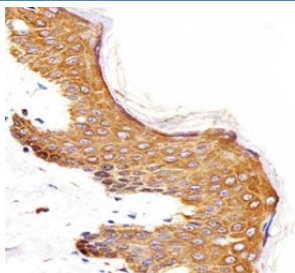


Epidermal Growth Factor Receptor Antibody (F47591)

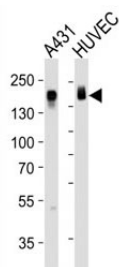
| Catalog No. | Formulation | Size |
|---------------|--|---------|
| F47591-0.4ML | In 1X PBS, pH 7.4, with 0.09% sodium azide | 0.4 ml |
| F47591-0.08ML | In 1X PBS, pH 7.4, with 0.09% sodium azide | 0.08 ml |

[Bulk quote request](#)

| | |
|-----------------------------|--|
| Availability | 1-3 business days |
| Species Reactivity | Human |
| Predicted Reactivity | Chicken, Mouse |
| Format | Antigen affinity purified |
| Host | Rabbit |
| Clonality | Polyclonal (rabbit origin) |
| Isotype | Rabbit Ig |
| Purity | Antigen affinity |
| UniProt | P00533 |
| Localization | Cytoplasmic, membranous |
| Applications | IHC (Paraffin) : 1:25 Western Blot : 1:1000 |
| Limitations | This Epidermal Growth Factor Receptor antibody is available for research use only. |



IHC analysis of FFPE human skin section using Epidermal Growth Factor Receptor antibody; Ab was diluted at 1:25.



Western blot analysis of lysate from A431, HUVEC cell line (left to right) using Epidermal Growth Factor Receptor antibody; Ab was diluted at 1:1000 for each lane. Expected molecular weight: ~134/170 kDa (unmodified/glycosylated).

Description

The protein encoded by this gene is a transmembrane glycoprotein that is a member of the protein kinase superfamily. This protein is a receptor for members of the epidermal growth factor family. EGFR is a cell surface protein that binds to epidermal growth factor. Binding of the protein to a ligand induces receptor dimerization and tyrosine autophosphorylation and leads to cell proliferation. Mutations in this gene are associated with lung cancer. Multiple alternatively spliced transcript variants that encode different protein isoforms have been found for this gene.

Application Notes

The stated application concentrations are suggested starting amounts. Titration of the Epidermal Growth Factor Receptor antibody may be required due to differences in protocols and secondary/substrate sensitivity.

Immunogen

A portion of amino acids 259-287 from the human protein was used as the immunogen for this Epidermal Growth Factor Receptor antibody.

Storage

Aliquot the Epidermal Growth Factor Receptor antibody and store frozen at -20°C or colder. Avoid repeated freeze-thaw cycles.