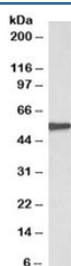


EPHX2 Antibody (R35916)

Catalog No.	Formulation	Size
R35916-100UG	0.5 mg/ml in 1X TBS, pH7.3, with 0.5% BSA (US sourced) and 0.02% sodium azide	100 ug

[Bulk quote request](#)

Availability	1-3 business days
Species Reactivity	Human
Format	Antigen affinity purified
Clonality	Polyclonal (goat origin)
Isotype	Goat Ig
Purity	Antigen affinity
Gene ID	2053
Applications	Western Blot : 0.3-1ug/ml ELISA (peptide) LOD : 1:128000
Limitations	This EPHX2 antibody is available for research use only.



Western blot testing of human kidney lysate with EPHX2 antibody at 0.3ug/ml. Predicted molecular weight: ~63/57 kDa (isoforms 1/2).

Description

Additional name(s) for this target protein: Epoxide hydrolase 2

Application Notes

Optimal dilution of the EPHX2 antibody should be determined by the researcher.

Immunogen

Amino acids SHGYVTVKPRVRLH were used as the immunogen for this EPHX2 antibody.

Storage

Aliquot and store the EPHX2 antibody at -20oC.