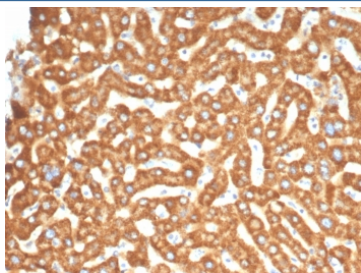


## Ephrin type-B receptor 4 Antibody / EPH Receptor B4 [clone EPHB4/6393] (V5212)

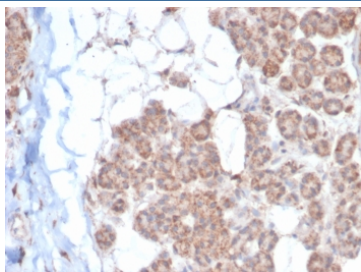
Catalog No.	Formulation	Size
V5212-100UG	0.2 mg/ml in 1X PBS with 0.1 mg/ml BSA (US sourced), 0.05% sodium azide	100 ug
V5212-20UG	0.2 mg/ml in 1X PBS with 0.1 mg/ml BSA (US sourced), 0.05% sodium azide	20 ug
V5212SAF-100UG	1 mg/ml in 1X PBS; BSA free, sodium azide free	100 ug

### Bulk quote request

<b>Availability</b>	1-3 business days
<b>Species Reactivity</b>	Human
<b>Format</b>	Purified
<b>Clonality</b>	Monoclonal (mouse origin)
<b>Isotype</b>	Mouse IgG2, kappa
<b>Clone Name</b>	EPHB4/6393
<b>Purity</b>	Protein A/G affinity
<b>UniProt</b>	P54760
<b>Localization</b>	Membrane, cytoplasm
<b>Applications</b>	Immunohistochemistry (FFPE) : 1-2ug/ml for 30 min at RT
<b>Limitations</b>	This Ephrin type-B receptor 4 antibody is available for research use only.



IHC staining of FFPE human liver tissue with Ephrin type-B receptor 4 antibody (clone EPHB4/6393). HIER: boil tissue sections in pH 9 10mM Tris with 1mM EDTA for 20 min and allow to cool before testing.



IHC staining of FFPE human salivary gland tissue with Ephrin type-B receptor 4 antibody (clone EPHB4/6393). HIER: boil tissue sections in pH 9 10mM Tris with 1mM EDTA for 20 min and allow to cool before testing.



Analysis of a HuProt(TM) microarray containing more than 19,000 full-length human proteins using Ephrin type-B receptor 4 antibody (clone EPHB4/6393). Z- and S- Score: The Z-score represents the strength of a signal that a monoclonal antibody (in combination with a fluorescently-tagged anti-IgG secondary antibody) produces when binding to a particular protein on the HuProt(TM) array. Z-scores are described in units of standard deviations (SD's) above the mean value of all signals generated on that array. If targets on HuProt(TM) are arranged in descending order of the Z-score, the S-score is the difference (also in units of SD's) between the Z-score. S-score therefore represents the relative target specificity of a mAb to its intended target. A mAb is considered to specific to its intended target, if the mAb has an S-score of at least 2.5. For example, if a mAb binds to protein X with a Z-score of 43 and to protein Y with a Z-score of 14, then the S-score for the binding of that mAb to protein X is equal to 29.

## Description

The Eph subfamily represents the largest group of receptor protein tyrosine kinases identified to date. While the biological activities of these receptors have yet to be determined, there is increasing evidence that they are involved in central nervous system function and in development.

## Application Notes

Optimal dilution of the Ephrin type-B receptor 4 antibody should be determined by the researcher.

## Immunogen

A recombinant partial protein sequence (within amino acids 1-200) from the human protein was used as the immunogen for the Ephrin type-B receptor 4 antibody.

## Storage

Aliquot the Ephrin type-B receptor 4 antibody and store frozen at -20oC or colder. Avoid repeated freeze-thaw cycles.