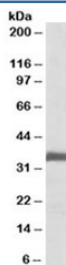


## Ephrin B2 Antibody (R33300)

Catalog No.	Formulation	Size
R33300-100UG	0.5 mg/ml in 1X TBS, pH7.3, with 0.5% BSA (US sourced) and 0.02% sodium azide	100 ug

[Bulk quote request](#)

Availability	1-3 business days
Species Reactivity	Human, Mouse, Rat
Predicted Reactivity	Cow, Dog, Pig
Format	Antigen affinity purified
Host	Goat
Clonality	Polyclonal (goat origin)
Isotype	Goat Ig
Purity	Antigen affinity
Gene ID	1948
Applications	Western Blot : 0.1-0.3ug/ml ELISA (peptide) LOD : 1:16000
Limitations	This Ephrin B2 antibody is available for research use only.



Western blot testing of rat lung lysate with Ephrin B2 antibody at 0.1ug/ml. Predicted molecular weight ~37kDa.

## Description

Additional name(s) for this target protein: EFNB2

## Application Notes

Optimal dilution of the Ephrin B2 antibody should be determined by the researcher.

## **Immunogen**

Amino acids CPKVDSKTVGQYE were used as the immunogen for this Ephrin B2 antibody.

## **Storage**

Aliquot and store the Ephrin B2 antibody at -20oC.