

EphB3 Antibody / Ephrin Receptor B3 (R30645)

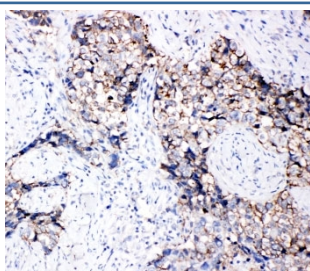
Catalog No.	Formulation	Size
R30645	0.5mg/ml if reconstituted with 0.2ml sterile DI water	100 ug

Bulk quote request

Availability	1-3 business days
Species Reactivity	Human, Mouse, Rat
Format	Antigen affinity purified
Clonality	Polyclonal (rabbit origin)
Isotype	Rabbit IgG
Purity	Antigen affinity
Buffer	Lyophilized from 1X PBS with 2.5% BSA and 0.025% sodium azide/thimerosal
UniProt	P54753
Applications	Western Blot : 0.5-1ug/ml Immunohistochemistry (FFPE) : 0.5-1ug/ml
Limitations	This EphB3 antibody is available for research use only.



Western blot testing of EphB3 antibody and Lane 1: HeLa; 2: A549 cell lysate



IHC-P: EphB3 antibody testing of human lung cancer tissue

Description

Ephrin Receptor B3, is also known as human embryo kinase2 (HEK2) or Eph-like tyrosine kinase 2 (ETK2) is a member of the EPH/ELK family of tyrosine kinases. The gene encodes a 998-amino acid polypeptide having a single putative transmembrane domain, a secretory signal sequence, and two fibronectin repeats. The gene is mapped to human chromosome 3q21-qter. EphB3 interacts with two ligands of EPH-related kinases (LERKs), LERK2/EFNB1 and LERK5/EFNB2. Coincubation of EphB3- and LERK2-expressing cells induces cell-cell adhesion and aggregation. Additionally, coexpression of the two proteins results in reduced kinase activity of EphB3.

Application Notes

The stated application concentrations are suggested starting amounts. Titration of the EphB3 antibody may be required due to differences in protocols and secondary/substrate sensitivity.

Immunogen

An amino acid sequence from the C-terminus of human Eph receptor B3 (SIQDMRLQMNQTLPVQV) was used as the immunogen for this EphB3 antibody (100% homologous in human, mouse and rat).

Storage

After reconstitution, the EphB3 antibody can be stored for up to one month at 4oC. For long-term, aliquot and store at -20oC. Avoid repeated freezing and thawing.