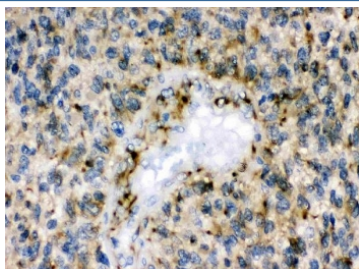


## EPHB1 Antibody / Eph Receptor B1 (R32141)

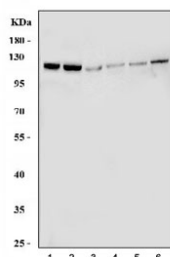
Catalog No.	Formulation	Size
R32141	0.5mg/ml if reconstituted with 0.2ml sterile DI water	100 ug

**Bulk quote request**

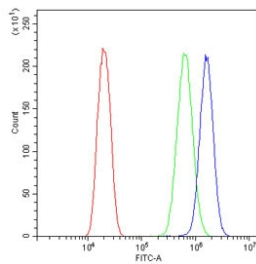
<b>Availability</b>	1-3 business days
<b>Species Reactivity</b>	Human, Mouse, Rat
<b>Format</b>	Antigen affinity purified
<b>Clonality</b>	Polyclonal (rabbit origin)
<b>Isotype</b>	Rabbit IgG
<b>Purity</b>	Antigen affinity
<b>Buffer</b>	Lyophilized from 1X PBS with 2.5% BSA and 0.025% sodium azide
<b>UniProt</b>	P54762
<b>Localization</b>	Cytoplasmic, membrane
<b>Applications</b>	Western Blot : 0.5-1ug/ml Immunohistochemistry (FFPE) : 2-5ug/ml Flow Cytometry : 1-3ug/10 <sup>6</sup> cells
<b>Limitations</b>	This EPHB1antibody is available for research use only.



IHC testing of FFPE human glioma tissue with EPHB1 antibody. HIER: Boil the paraffin sections in pH 6, 10mM citrate buffer for 20 minutes and allow to cool prior to staining.



Western blot testing of 1) human U-251, 2) human HEL, 3) rat testis, 4) rat brain, 5) mouse testis and 6) mouse brain tissue lysate with EPHB1 antibody. Expected/observed molecular weight ~111 kDa.



Flow cytometry testing of human U-2 OS cells with EPHB1 antibody at 1ug/10<sup>6</sup> cells (blocked with goat sera); Red=cells alone, Green=isotype control, Blue= EPHB1 antibody.

## Description

Ephrin type-B receptor 1 is a protein that in humans is encoded by the EPHB1 gene. Ephrin receptors and their ligands, the ephrins, mediate numerous developmental processes, particularly in the nervous system. Based on their structures and sequence relationships, ephrins are divided into the ephrin-A (EFNA) class, which are anchored to the membrane by a glycosylphosphatidylinositol linkage, and the ephrin-B (EFNB) class, which are transmembrane proteins. The Eph family of receptors are divided into 2 groups based on the similarity of their extracellular domain sequences and their affinities for binding ephrin-A and ephrin-B ligands. Ephrin receptors make up the largest subgroup of the receptor tyrosine kinase (RTK) family. The protein encoded by this gene is a receptor for ephrin-B family members.

## Application Notes

Optimal dilution of the EPHB1 antibody should be determined by the researcher.

## Immunogen

Amino acids RTYQVCNVFEPNQNNWLLTTFINRRGAHRIYTE of human Eph receptor B1 were used as the immunogen for the EPHB1 antibody.

## Storage

After reconstitution, the EPHB1 antibody can be stored for up to one month at 4°C. For long-term, aliquot and store at -20°C. Avoid repeated freezing and thawing.