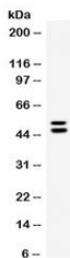


EPCR Antibody / CD201 (R32352)

Catalog No.	Formulation	Size
R32352	0.5mg/ml if reconstituted with 0.2ml sterile DI water	100 ug

[Bulk quote request](#)

Availability	1-3 business days
Species Reactivity	Human
Format	Antigen affinity purified
Host	Rabbit
Clonality	Polyclonal (rabbit origin)
Isotype	Rabbit IgG
Purity	Antigen affinity
Buffer	Lyophilized from 1X PBS with 2.5% BSA and 0.025% sodium azide
UniProt	Q9UNN8
Applications	Western Blot : 0.1-0.5ug/ml ELISA : 0.1-0.5ug/ml (human protein tested); request BSA-free format for coating
Limitations	This EPCR antibody is available for research use only.



Western blot testing of human A549 cell lysate with EPCR antibody. Expected molecular weight ~24/36-46 kDa (unmodified/glycosylated). The ~52 kDa band may represent a further modification of the protein.

Description

Endothelial protein C receptor (EPCR), also known as activated protein C receptor (APC receptor), is a protein that in humans is encoded by the PROCR gene. It has also recently been designated CD201 (cluster of differentiation 201). The protein encoded by this gene is a receptor for activated protein C, a serine protease activated by and involved in the blood coagulation pathway. And it is an N-glycosylated type I membrane protein that enhances the activation of protein C. Mutations in this gene have been associated with venous thromboembolism and myocardial infarction, as well as with late fetal loss during pregnancy. The encoded protein may also play a role in malarial infection and has been associated with

cancer.

Application Notes

Optimal dilution of the EPCR antibody should be determined by the researcher.

Immunogen

Amino acids 18-210 of human EPCR/CD201 were used as the immunogen for the EPCR antibody.

Storage

After reconstitution, the EPCR antibody can be stored for up to one month at 4oC. For long-term, aliquot and store at -20oC. Avoid repeated freezing and thawing.

References (1)