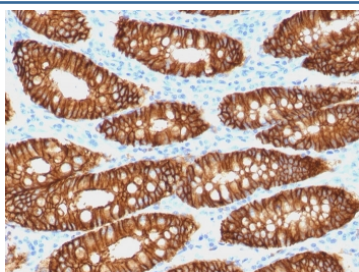


## EpCAM Antibody [clone VU-1D9] (V2184BTN)

Catalog No.	Formulation	Size
V2184BTN	0.1 mg/ml with 0.1 mg/ml BSA (US sourced), 0.05% sodium azide	500 ul

[Bulk quote request](#)

Availability	1-3 business days
Species Reactivity	Human
Format	Biotin Conjugate
Host	Mouse
Clonality	Monoclonal (mouse origin)
Isotype	Mouse IgG1, kappa
Clone Name	VU-1D9
Purity	Protein G affinity chromatography
UniProt	P16422
Localization	Cell surface, cytoplasmic
Applications	Flow Cytometry : 5ul per test per one million cells or 5ul per 100ul of whole blood Immunofluorescence : 2-4ug/ml Immunohistochemistry (FFPE) : 2-4ug/ml at RT
Limitations	This EpCAM antibody is available for research use only.



IHC staining of FFPE human colon carcinoma with biotinylated EpCAM antibody (clone VU-1D9). HIER: boil tissue sections in pH 9 10mM Tris with 1mM EDTA for 20 min and allow to cool before testing.

## Description

EGP40 is a 40-43kDa transmembrane epithelial glycoprotein, also identified as epithelial specific antigen (ESA), or epithelial cellular adhesion molecule (Ep-CAM). It is expressed on baso-lateral cell surface in most simple epithelia and a vast majority of carcinomas. This antibody has been used to distinguish adenocarcinoma from pleural mesothelioma and

hepatocellular carcinoma. This antibody is also useful in distinguishing serous carcinomas of the ovary from mesothelioma.

## **Application Notes**

Optimal dilution of the EpCAM antibody should be determined by the researcher.

## **Immunogen**

Small cell lung carcinoma cells were used as the immunogen for the EpCAM antibody.

## **Storage**

Store the EpCAM antibody at 2-8oC (up to one month) or aliquot and store at -20oC (longer term).