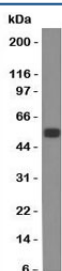


## EpCAM Antibody [clone SPM534] (V9019)

Catalog No.	Formulation	Size
V9019-0.5ML	Bioreactor concentrate with 0.05% sodium azide	0.5 ml
V9019-0.1ML	Bioreactor concentrate with 0.05% sodium azide	0.1 ml

[Bulk quote request](#)

Availability	1-3 business days
Species Reactivity	Rat
Format	Bioreactor concentrate
Clonality	Monoclonal (mouse origin)
Isotype	Mouse IgG1, kappa
Clone Name	SPM534
UniProt	O55159
Localization	Cell surface, cytoplasmic
Applications	Western Blot : 1:100-1:200
Limitations	This EpCAM antibody is available for research use only.



Western blot of rat colon lysate probed with EpCAM antibody (SPM534). Expected molecular weight: ~35 kDa (unmodified), 40-43 kDa (glycosylated).

## Description

EGP40 is a 40-43kDa transmembrane epithelial glycoprotein, also identified as epithelial specific antigen (ESA), or epithelial cellular adhesion molecule (EpCAM). It is expressed on baso-lateral cell surface in most simple epithelia and a vast majority of carcinomas.

## Application Notes

The optimal dilution of the EpCAM antibody for each application should be determined by the researcher.

## **Immunogen**

Rat small intestine cells were used as the immunogen for this EpCAM antibody.

## **Storage**

Store the EpCAM antibody at 2-8oC (with azide) or aliquot and store at -20oC or colder (without azide).