

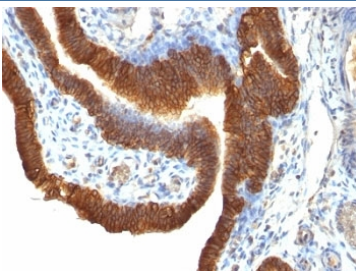
## EpCAM Antibody [clone SPM491] (V2688)

Catalog No.	Formulation	Size
V2688-100UG	0.2 mg/ml in 1X PBS with 0.1 mg/ml BSA (US sourced) and 0.05% sodium azide	100 ug
V2688-20UG	0.2 mg/ml in 1X PBS with 0.1 mg/ml BSA (US sourced) and 0.05% sodium azide	20 ug
V2688SAF-100UG	1 mg/ml in 1X PBS; BSA free, sodium azide free	100 ug
V2688IHC-7ML	Prediluted in 1X PBS with 0.1 mg/ml BSA (US sourced) and 0.05% sodium azide; *For IHC use only*	7 ml

 Citations (1)

[Bulk quote request](#)

<b>Availability</b>	1-3 business days
<b>Species Reactivity</b>	Human
<b>Format</b>	Purified
<b>Host</b>	Mouse
<b>Clonality</b>	Monoclonal (mouse origin)
<b>Isotype</b>	Mouse IgG1, kappa
<b>Clone Name</b>	SPM491
<b>Purity</b>	Protein G affinity chromatography
<b>UniProt</b>	P16422
<b>Localization</b>	Cell surface & cytoplasmic
<b>Applications</b>	Immunohistochemistry (FFPE) : 0.25-0.5ug/ml for 30 min at RT
<b>Limitations</b>	This EpCAM antibody is available for research use only.



IHC: Formalin-fixed, paraffin-embedded human ovarian carcinoma stained with EpCAM antibody (SPM491).

## Description

EGP40 is a 40-43kDa transmembrane epithelial glycoprotein, also identified as epithelial specific antigen (ESA), or epithelial cellular adhesion molecule (Ep-CAM). It is expressed on baso-lateral cell surface in most simple epithelia and a vast majority of carcinomas. This antibody has been used to distinguish adenocarcinoma from pleural mesothelioma and hepatocellular carcinoma. This antibody is also useful in distinguishing serous carcinomas of the ovary from mesothelioma.

Explore our [EpCAM Antibody / Epithelial Cell Marker Antibody](#) page for additional validation data and applications involving epithelial cell identification, tissue organization, and epithelial-derived tumor research.

## Application Notes

Optimal dilution of the EpCAM antibody should be determined by the researcher.

1. Staining of formalin-fixed tissues requires boiling tissue sections in pH 9 10mM Tris with 1mM EDTA for 10-20 min followed by cooling at RT for 20 min
2. The prediluted format is supplied in a dropper bottle and is optimized for use in IHC. After epitope retrieval step (if required), drip mAb solution onto the tissue section and incubate at RT for 30 min.

## Immunogen

Recombinant full-length human protein was used as the immunogen for the EpCAM antibody.

## Storage

Store the EpCAM antibody at 2-8oC (with azide) or aliquot and store at -20oC or colder (without azide).