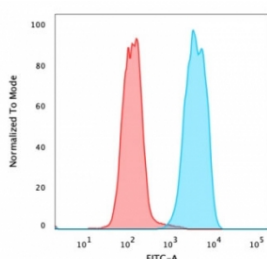


EpCAM Antibody [clone SPM134] (V2689CF488)

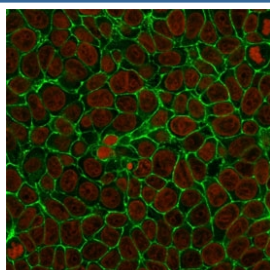
Catalog No.	Formulation	Size
V2689CF488-100T	500 ul at 0.1 mg/ml with 0.1 mg/ml BSA (US sourced), 0.05% sodium azide	100 Tests

[Bulk quote request](#)

Availability	1-3 business days
Species Reactivity	Human
Format	CF488 Conjugate
Host	Mouse
Clonality	Monoclonal (mouse origin)
Isotype	Mouse IgG1, kappa
Clone Name	SPM134
Purity	Protein G affinity chromatography
UniProt	P16422
Localization	Cell surface
Applications	Flow Cytometry : 1-2ug/million cells Immunofluorescence : 1-3ug/ml
Limitations	This EpCAM antibody is available for research use only.



Flow cytometry testing of PFA-fixed human MCF7 cells with unlabeled anti-EpCAM antibody (clone SPM134) + CF488-labeled secondary; Red=isotype control, Blue= anti-EpCAM antibody.



Immunofluorescent staining of human MCF7 cells with unlabeled anti-EpCAM antibody (clone SPM134, green) + CF488-labeled secondary and Reddot nuclear stain (red).

Description

EGP40 is a 40-43kDa transmembrane epithelial glycoprotein, also identified as epithelial specific antigen (ESA), or epithelial cellular adhesion molecule (Ep-CAM). It is expressed on baso-lateral cell surface in most simple epithelia and a vast majority of carcinomas. This antibody has been used to distinguish adenocarcinoma from pleural mesothelioma and hepatocellular carcinoma. This antibody is also useful in distinguishing serous carcinomas of the ovary from mesothelioma.

Application Notes

Optimal dilution of the EpCAM antibody should be determined by the researcher.

Immunogen

Small cell lung carcinoma cells were used as the immunogen.

Storage

Store the EpCAM antibody at 2-8oC, protected from light.