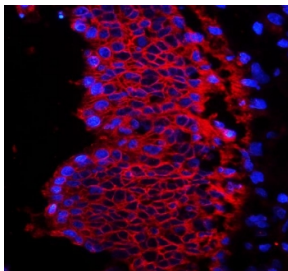


## EpCAM Antibody (R32527)

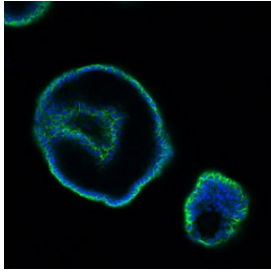
Catalog No.	Formulation	Size
R32527	0.5mg/ml if reconstituted with 0.2ml sterile DI water	100 ug

### Bulk quote request

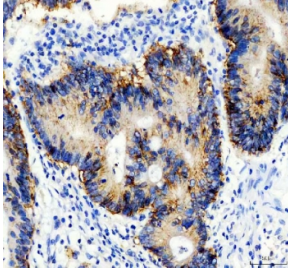
<b>Availability</b>	1-3 business days
<b>Species Reactivity</b>	Human
<b>Format</b>	Antigen affinity purified
<b>Host</b>	Rabbit
<b>Clonality</b>	Polyclonal (rabbit origin)
<b>Isotype</b>	Rabbit IgG
<b>Purity</b>	Antigen affinity
<b>Buffer</b>	Lyophilized from 1X PBS with 2% Trehalose
<b>UniProt</b>	P16422
<b>Localization</b>	Cell surface, cytoplasmic
<b>Applications</b>	Western Blot : 0.5-1ug/ml Immunohistochemistry (FFPE) : 2-5ug/ml Immunofluorescence : 5ug/ml Flow Cytometry : 1-3ug/10 <sup>6</sup> cells ELISA : 0.5-1ug/ml (human protein tested)
<b>Limitations</b>	This EpCAM antibody is available for research use only.



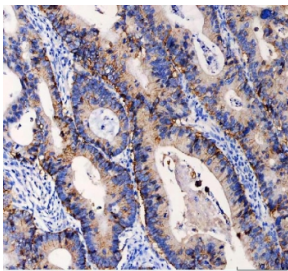
EpCAM Antibody Rectal Cancer IF. Immunofluorescent staining of human rectal cancer tissue with EpCAM antibody (red) and DAPI (blue). HIER: steam sections in pH6 citrate buffer for 20 min.



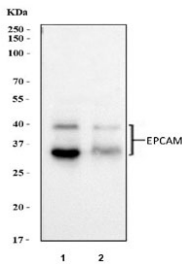
EpCAM Antibody Colon IF. Immunofluorescent staining of human colon tissue with EpCAM antibody (green) and DAPI (blue). HIER: steam sections in pH6 citrate buffer for 20 min.



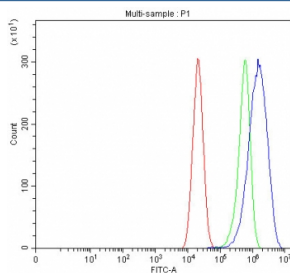
EpCAM Antibody Colon Cancer IHC. Immunohistochemistry staining of FFPE human colon cancer tissue with EpCAM antibody. HIER: boil tissue sections in pH8 EDTA for 20 min and allow to cool before testing.



EpCAM Antibody Colon Cancer Tissue IHC. Immunohistochemistry staining of FFPE human colon cancer tissue with EpCAM antibody. HIER: boil tissue sections in pH8 EDTA for 20 min and allow to cool before testing.



EpCAM Antibody WB. Western blot testing of human 1) Caco-2 and 2) MCF7 cell lysate with EpCAM antibody at 0.5ug/ml. Expected molecular weight: 35/40-42 kDa.



EpCAM Antibody FACS. Flow cytometry testing of fixed human Caco-2 cells with EpCAM antibody at 1ug/million cells (blocked with goat sera); Red=cells alone, Green=isotype control, Blue= EpCAM antibody.

## Description

EpCAM Antibody detects Epithelial cell adhesion molecule, a transmembrane glycoprotein mediating Ca<sup>2+</sup>-independent homotypic cell-cell adhesion in epithelia. This gene encodes a carcinoma-associated antigen and is a member of a family that includes at least two type I membrane proteins. This antigen is expressed on most normal epithelial cells and gastrointestinal carcinomas and functions as a homotypic calcium-independent cell adhesion molecule. The antigen is being used as a target for immunotherapy treatment of human carcinomas. Mutations in this gene result in congenital tufting enteropathy.

Explore our [EpCAM Antibody / Epithelial Cell Marker Antibody](#) page for additional validation data and applications

involving epithelial cell identification, tissue organization, and epithelial-derived tumor research.

## Application Notes

Differences in protocols and secondary/substrate sensitivity may require the EpCAM antibody to be titrated for optimal performance.

## Immunogen

Amino acids 147-189 (ELKHKAREKPYDSKSLRTALQKEITTRYQLDPKFITSILYENN) from the human protein were used as the immunogen for the EpCAM antibody.

## Storage

After reconstitution, the EpCAM antibody can be stored for up to one month at 4oC. For long-term, aliquot and store at -20oC. Avoid repeated freezing and thawing.

## References (1)