

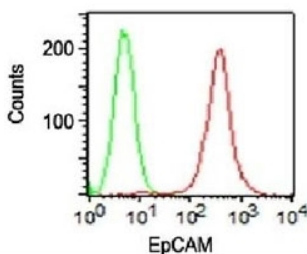
## EpCAM Antibody PE Conjugate [clone VU-1D9] (V2184PE)

Catalog No.	Formulation	Size
V2184PE-100T	500 ul at 0.1 mg/ml with 0.1 mg/ml BSA (US sourced), 0.05% sodium azide	100 Tests

 Citations (9)

[Bulk quote request](#)

<b>Availability</b>	1-3 business days
<b>Species Reactivity</b>	Human. Does not react with rat. Other species not known.
<b>Format</b>	PE Conjugate
<b>Host</b>	Mouse
<b>Clonality</b>	Monoclonal (mouse origin)
<b>Isotype</b>	Mouse IgG1, kappa
<b>Clone Name</b>	VU-1D9
<b>Purity</b>	Protein G affinity chromatography
<b>Gene ID</b>	4072 (Human)
<b>Localization</b>	Cell surface
<b>Applications</b>	Flow Cytometry : 5ul per test per one million cells in 0.1ml (or 5ul per 100ul of whole blood) Immunofluorescence : 1:50-1:100
<b>Limitations</b>	This EpCAM antibody is available for research use only.



EpCAM Antibody PE Conjugate FACS. Surface FACS staining of HT29 cells using PE conjugated EpCAM antibody (red) and isotype control antibody (green).

### Description

Epithelial cellular adhesion molecule (EpCAM), is also identified as epithelial specific antigen (ESA) and the 40kDa transmembrane epithelial glycoprotein EGP40. EpCAM is expressed on the baso-lateral cell surface in most simple epithelia and a vast majority of carcinomas. This antibody has been used to distinguish adenocarcinoma from pleural mesothelioma and hepatocellular carcinoma. EpCAM antibody is also useful in distinguishing serous carcinomas of the

ovary from mesothelioma.

Explore our [EpCAM Antibody / Epithelial Cell Marker Antibody](#) page for additional validation data and applications involving epithelial cell identification, tissue organization, and epithelial-derived tumor research.

## Application Notes

The concentration stated for each application is a general starting point. Variations in protocols, secondaries and substrates may require the antibody to be titered up or down for optimal performance.

## Immunogen

Small cell lung carcinoma cells were used as the immunogen for this antibody.

## Storage

Store the EpCAM antibody at 2-8°C. Conjugate is light-sensitive, protect from light.

## References (2)