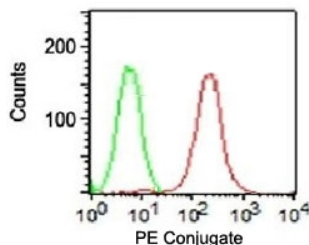


## EpCAM Antibody PE Conjugate [clone SPM134] (V2689PE)

Catalog No.	Formulation	Size
V2689PE-100T	500 ul at 0.1 mg/ml with 0.1 mg/ml BSA (US sourced), 0.05% sodium azide	100 Tests

[Bulk quote request](#)

<b>Availability</b>	1-3 business days
<b>Species Reactivity</b>	Human
<b>Format</b>	PE Conjugate
<b>Host</b>	Mouse
<b>Clonality</b>	Monoclonal (mouse origin)
<b>Isotype</b>	Mouse IgG1, kappa
<b>Clone Name</b>	SPM134
<b>Purity</b>	Protein G affinity chromatography
<b>UniProt</b>	P16422
<b>Localization</b>	Cell surface
<b>Applications</b>	Flow Cytometry : 1-2ug/million cells
<b>Limitations</b>	This EpCAM antibody is available for research use only.



FACS surface testing of HT29 cells using EpCAM antibody (red) and isotype control (green).

### Description

EGP40 is a 40-43kDa transmembrane epithelial glycoprotein, also identified as epithelial specific antigen (ESA), or epithelial cellular adhesion molecule (Ep-CAM). It is expressed on baso-lateral cell surface in most simple epithelia and a vast majority of carcinomas. This antibody has been used to distinguish adenocarcinoma from pleural mesothelioma and hepatocellular carcinoma. This antibody is also useful in distinguishing serous carcinomas of the ovary from mesothelioma.

Explore our [EpCAM Antibody / Epithelial Cell Marker Antibody](#) page for additional validation data and applications involving epithelial cell identification, tissue organization, and epithelial-derived tumor research.

## **Application Notes**

Optimal dilution of the EpCAM antibody should be determined by the researcher.

## **Immunogen**

Small cell lung carcinoma cells were used as the immunogen for the EpCAM antibody.

## **Storage**

Store the EpCAM antibody at 2-8oC (with azide) or aliquot and store at -20oC or colder (without azide).