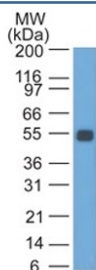


EpCAM Antibody [clone GZ-1] (V8327)

Catalog No.	Formulation	Size
V8327-0.5ML	Bioreactor concentrate with 0.05% sodium azide	0.5 ml
V8327-0.1ML	Bioreactor concentrate with 0.05% sodium azide	0.1 ml

[Bulk quote request](#)

Availability	1-3 business days
Species Reactivity	Rat
Format	Bioreactor concentrate
Host	Mouse
Clonality	Monoclonal (mouse origin)
Isotype	Mouse IgG1, kappa
Clone Name	GZ-1
Purity	Culture supernatant
UniProt	P16422
Localization	Cell surface, cytoplasmic
Applications	Western Blot : 1:100-1:200
Limitations	This EpCAM antibody is available for research use only.



Western blot testing of rat colon lysate with EpCAM antibody. Expected molecular weight: ~35 kDa (unmodified), 40-43 kDa (glycosylated).

Description

EGP40 is a 40-43kDa transmembrane epithelial glycoprotein, also identified as epithelial specific antigen (ESA), or epithelial cellular adhesion molecule (Ep-CAM). It is expressed on basolateral cell surface in most simple epithelia and a vast majority of carcinomas.

Explore our [EpCAM Antibody / Epithelial Cell Marker Antibody](#) page for additional validation data and applications involving epithelial cell identification, tissue organization, and epithelial-derived tumor research.

Application Notes

Optimal dilution of the EpCAM antibody should be determined by the researcher.

Immunogen

Rat small intestine cells were used as the immunogen for the EpCAM antibody. The epitopes of the GZ-1 and GZ-20 monoclonal antibodies are known to be different.

Storage

Store the EpCAM antibody at 2-8oC (with azide) or aliquot and store at -20oC or colder (without azide).