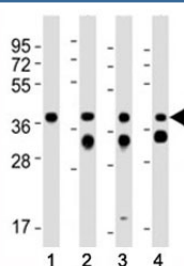


EpCAM Antibody (F53326)

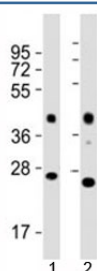
Catalog No.	Formulation	Size
F53326-0.4ML	In 1X PBS, pH 7.4, with 0.09% sodium azide	0.4 ml
F53326-0.08ML	In 1X PBS, pH 7.4, with 0.09% sodium azide	0.08 ml

[Bulk quote request](#)

Availability	1-3 business days
Species Reactivity	Human, Mouse, Rat
Format	Antigen affinity purified
Host	Rabbit
Clonality	Polyclonal (rabbit origin)
Isotype	Rabbit Ig
Purity	Antigen affinity
UniProt	Q99JW5
Applications	Western Blot : 1:1000-2000
Limitations	This EpCAM antibody is available for research use only.



Western blot testing of EpCAM antibody at 1:2000 dilution. Lane 1: mouse kidney; 2: mouse colon; 3: human MCF-7; 4: rat colon lysate; Expected molecular weight: ~35 kDa (unmodified), 40-43 kDa (glycosylated).



Western blot testing of EpCAM antibody at 1:2000 and mouse samples 1) lung and 2) kidney lysate; Expected molecular weight: ~35 kDa (unmodified), 40-43 kDa (glycosylated).

Description

May act as a physical homophilic interaction molecule between intestinal epithelial cells (IECs) and intraepithelial lymphocytes (IELs) at the mucosal epithelium for providing immunological barrier as a first line of defense against mucosal infection. Plays a role in embryonic stem cells proliferation and differentiation. Up-regulates the expression of FABP5, MYC and cyclins A and E (By similarity).

Application Notes

Titration of the EpCAM antibody may be required due to differences in protocols and secondary/substrate sensitivity.

Immunogen

This mouse EpCAM antibody was produced from a rabbit immunized with a KLH conjugated synthetic peptide between 217-251 amino acids from the C-terminal region of mouse Epcam.

Storage

Aliquot the EpCAM antibody and store frozen at -20oC or colder. Avoid repeated freeze-thaw cycles.