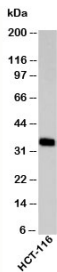


EpCAM Antibody [clone EPM4072] (N1139)

Catalog No.	Formulation	Size
N1139-100UG	0.5 mg/ml in 1X PBS with 0.1 mg/ml BSA (US sourced), 0.05% sodium azide	100 ug
N1139-25UG	0.5 mg/ml in 1X PBS with 0.1 mg/ml BSA (US sourced), 0.05% sodium azide	25 ug

[Bulk quote request](#)

Species Reactivity	Human
Format	Purified
Host	Mouse
Clonality	Monoclonal (mouse origin)
Isotype	Mouse IgG1, kappa
Clone Name	EPM4072
Purity	Protein G affinity chromatography
Buffer	1X PBS, pH 7.4
Gene ID	4072
Applications	Western Blot : 2-4ug/ml
Limitations	This EpCAM antibody is available for research use only.



Western blot testing of human samples with EpCAM antibody at 2ug/ml. Expected molecular weight: ~35 kDa (unmodified), 40-43 kDa (glycosylated).

Description

Epithelial cellular adhesion molecule (EpCAM), also called 'epithelial specific antigen,' or ESA, and 'epithelial glycoprotein EGP40.' It is expressed exclusively on cells of epithelial origin, making it a useful epithelial cell marker and a surface marker for human and mouse embryonic stem cells. In epithelial tissues, active proliferation corresponds to increased EpCAM levels, whereas differentiation is associated with low levels of the protein.

Explore our [EpCAM Antibody / Epithelial Cell Marker Antibody](#) page for additional validation data and applications involving epithelial cell identification, tissue organization, and epithelial-derived tumor research.

Immunogen

A recombinant protein fragment from the C-terminal region of human EpCAM was used as the immunogen for this antibody.

Storage

Aliquot the EpCAM antibody and store frozen at -20oC or colder. Avoid repeated freeze-thaw cycles.