

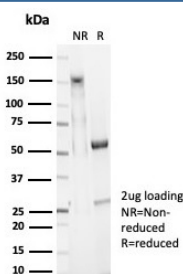
EpCAM Antibody [clone EGP40/7025R] (V8949)

Catalog No.	Formulation	Size
V8949-100UG	0.2 mg/ml in 1X PBS with 0.1 mg/ml BSA (US sourced), 0.05% sodium azide	100 ug
V8949-20UG	0.2 mg/ml in 1X PBS with 0.1 mg/ml BSA (US sourced), 0.05% sodium azide	20 ug
V8949SAF-100UG	1 mg/ml in 1X PBS; BSA free, sodium azide free	100 ug

Recombinant **RABBIT MONOCLONAL**

[Bulk quote request](#)

Availability	1-3 business days
Species Reactivity	Human
Format	Purified
Host	Rabbit
Clonality	Recombinant Rabbit Monoclonal
Isotype	Rabbit IgG
Clone Name	EGP40/7025R
Purity	Protein A affinity
UniProt	P16422
Localization	Cell surface
Applications	Immunohistochemistry (FFPE) : 0.5-1ug/ml
Limitations	This EpCAM antibody is available for research use only.



SDS-PAGE analysis of purified, BSA-free EpCAM antibody (clone EGP40/7025R) as confirmation of integrity and purity.

Description

Epithelial cellular adhesion molecule (Ep-CAM) is a 40-43kDa transmembrane epithelial glycoprotein, also identified as epithelial specific antigen (ESA). It is expressed on baso-lateral cell surface in most simple epithelia and a vast majority of

carcinomas.

Application Notes

Optimal dilution of the EpCAM antibody should be determined by the researcher.

Immunogen

A portion of amino acids 100-224 was used as the immunogen for the EpCAM antibody. The epitope is known to be within amino acids 202-212.

Storage

Aliquot the EpCAM antibody and store frozen at -20oC or colder. Avoid repeated freeze-thaw cycles.