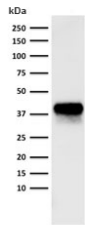


EpCAM Antibody Cocktail [clone PAN-EpCAM] (V2694)

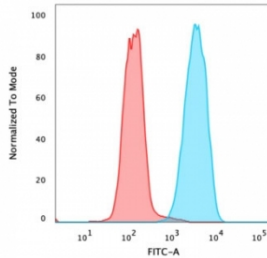
Catalog No.	Formulation	Size
V2694-100UG	0.2 mg/ml in 1X PBS with 0.1 mg/ml BSA (US sourced) and 0.05% sodium azide	100 ug
V2694-20UG	0.2 mg/ml in 1X PBS with 0.1 mg/ml BSA (US sourced) and 0.05% sodium azide	20 ug
V2694SAF-100UG	1 mg/ml in 1X PBS; BSA free, sodium azide free	100 ug
V2694IHC-7ML	Prediluted in 1X PBS with 0.1 mg/ml BSA (US sourced) and 0.05% sodium azide; *For IHC use only*	7 ml

[Bulk quote request](#)

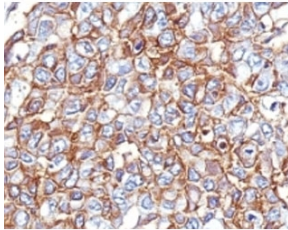
Availability	1-3 business days
Species Reactivity	Human
Format	Purified
Host	Mouse
Clonality	Monoclonal (mouse origin)
Isotype	Mouse IgG, kappa
Clone Name	PAN-EpCAM
Purity	Protein G affinity chromatography
UniProt	P16422
Localization	Cell surface, cytoplasmic
Applications	Flow Cytometry : 1-2ug/million cells Immunofluorescence : 1-2ug/ml Western Blot : 1-2ug/ml Immunohistochemistry (FFPE) : 0.5-1ug/ml for 30 min at RT
Limitations	This EpCAM antibody cocktail is available for research use only.



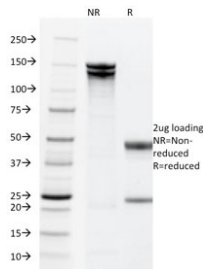
Western blot testing of human lung lysate with EpCAM antibody cocktail (clone PAN-EpCAM).



Flow cytometry testing of PFA-fixed human MCF7 cells with EpCAM antibody cocktail (clone PAN-EpCAM); Red=isotype control, Blue= EpCAM antibody cocktail antibody.



IHC: Formalin-fixed, paraffin-embedded human breast carcinoma stained with EpCAM antibody cocktail (PAN-EpCAM).



SDS-PAGE analysis of purified, BSA-free EpCAM antibody cocktail (clone PAN-EpCAM) as confirmation of integrity and purity.

Description

The EpCAM Antibody Cocktail is a cocktail of four highly specific monoclonal antibodies (EGP40/826, EGP40/837, EGP40/1110, EGP40/1120) that recognize extracellular as well as intracellular domains of the epithelial cellular adhesion molecule (Ep-CAM). It is a 40-43kDa transmembrane epithelial glycoprotein, identified as epithelial specific antigen (ESA), or Ep-CAM. Ep-CAM is expressed on baso-lateral cell surface in most simple epithelia and a vast majority of carcinomas. This epithelial antigen plays an important role as a tumor-cell marker in lymph nodes from patients with esophageal carcinoma otherwise classified as node-negative. Epithelial antigen has also been suggested as a discriminator between basal cell and baso-squamous carcinomas, and squamous cell carcinoma of the skin.

Explore our [EpCAM Antibody / Epithelial Cell Marker Antibody](#) page for additional validation data and applications involving epithelial cell identification, tissue organization, and epithelial-derived tumor research.

Application Notes

Optimal dilution of the EpCAM antibody cocktail should be determined by the researcher.

1. Staining of formalin-fixed tissues requires boiling tissue sections in 10mM Citrate buffer, pH 6.0, for 10-20 min followed by cooling at RT for 20 min

2. The prediluted format is supplied in a dropper bottle and is optimized for use in IHC. After epitope retrieval step (if required), drip mAb solution onto the tissue section and incubate at RT for 30 min.

Immunogen

Recombinant human protein was used as the immunogen for the EpCAM antibody cocktail.

Storage

Store the EpCAM antibody cocktail at 2-8oC (with azide) or aliquot and store at -20oC or colder (without azide).