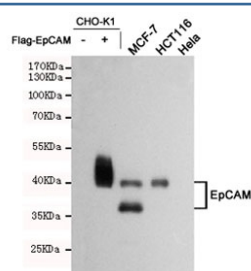


## EpCAM Antibody [clone 1D5-B6-B10] (F54002)

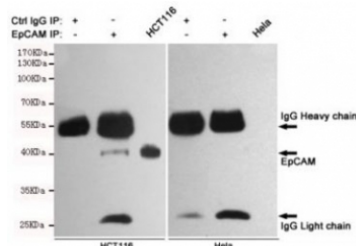
Catalog No.	Formulation	Size
F54002-0.1ML	In PBS with 50% glycerol and 0.03% ProClin 300	0.1 ml

**Bulk quote request**

<b>Availability</b>	1-3 business days
<b>Species Reactivity</b>	Human
<b>Format</b>	Purified
<b>Clonality</b>	Monoclonal (mouse origin)
<b>Isotype</b>	Mouse IgG1
<b>Clone Name</b>	1D5-B6-B10
<b>Purity</b>	Protein G affinity
<b>UniProt</b>	P16422
<b>Applications</b>	Western Blot : 1:1000 Immunoprecipitation : suitable
<b>Limitations</b>	This EpCAM antibody is available for research use only.



Western blot testing of lysate from CHO-K1, EpCAM transfected CHO-K1, MCF7 (+ control), HCT116 (+ control), and HeLa (- control) cell lysate using EpCAM antibody at 1:1000. Expected molecular weight: ~35 kDa (unmodified), 40-43 kDa (glycosylated).



Immunoprecipitation of HCT116 (+ control) and HeLa (- control) cell lysate using EpCAM antibody.

## Description

May act as a physical homophilic interaction molecule between intestinal epithelial cells (IECs) and intraepithelial lymphocytes (IELs) at the mucosal epithelium for providing immunological barrier as a first line of defense against mucosal infection. Plays a role in embryonic stem cells proliferation and differentiation.

## Application Notes

The stated application concentrations are suggested starting points. Titration of the EpCAM antibody may be required due to differences in protocols and secondary/substrate sensitivity.

## Immunogen

A recombinant partial protein was used as the immunogen for this EpCAM antibody.

## Storage

Store the EpCAM antibody at -20oC.