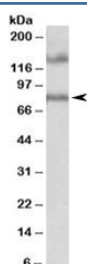


## EPB41L5 Antibody (R33896)

Catalog No.	Formulation	Size
R33896-100UG	0.5 mg/ml in 1X TBS, pH7.3, with 0.5% BSA (US sourced) and 0.02% sodium azide	100 ug

[Bulk quote request](#)

Availability	1-3 business days
Species Reactivity	Human
Format	Antigen affinity purified
Clonality	Polyclonal (goat origin)
Isotype	Goat Ig
Purity	Antigen affinity
Gene ID	57669
Applications	Western Blot : 1-3ug/ml ELISA (peptide) LOD : 1:8000
Limitations	This EPB41L5 antibody is available for research use only.



Western blot testing of human hippocampus lysate with EPB41L5 antibody at 1ug/ml. The expected ~80 kDa band and the additional ~140 kDa band are both blocked by the immunizing peptide.

## Description

Additional name(s) for this target protein: Erythrocyte membrane protein band 4.1 like 5

## Application Notes

Optimal dilution of the EPB41L5 antibody should be determined by the researcher.

## Immunogen

Amino acids ENLPQSPGTDQHD were used as the immunogen for this EPB41L5 antibody.

## Storage

Aliquot and store the EPB41L5 antibody at -20oC.