

## EPB41L2 Antibody (R35747)

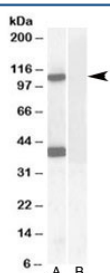
Catalog No.	Formulation	Size
R35747-100UG	0.5 mg/ml in 1X TBS, pH7.3, with 0.5% BSA (US sourced) and 0.02% sodium azide	100 ug

[Bulk quote request](#)

Availability	1-3 business days
Species Reactivity	Human
Format	Antigen affinity purified
Host	Goat
Clonality	Polyclonal (goat origin)
Isotype	Goat Ig
Purity	Antigen affinity
Gene ID	2037
Applications	Western Blot : 0.03-0.1ug/ml Immunohistochemistry (FFPE) : 3-5ug/ml ELISA (peptide) LOD : 1:32000
Limitations	This EPB41L2 antibody is available for research use only.



IHC staining of FFPE human uterus with EPB41L2 antibody at 2.5ug/ml. HIER: steamed with pH6 citrate buffer, AP-staining.



Western blot testing of human cerebellum lysate with EPB41L2 antibody at 0.1ug/ml with [B] and without [A] blocking/immunizing peptide. Predicted/observed molecular weight: ~110kDa. Both observed bands are blocked by addition of immunizing peptide.

## Description

Additional name(s) for this target protein: Erythrocyte membrane protein band 4.1-like 2

## Application Notes

Optimal dilution of the EPB41L2 antibody should be determined by the researcher.

## Immunogen

Amino acids RREVRSPKAPH were used as the immunogen for this EPB41L2 antibody.

## Storage

Aliquot and store the EPB41L2 antibody at -20oC.