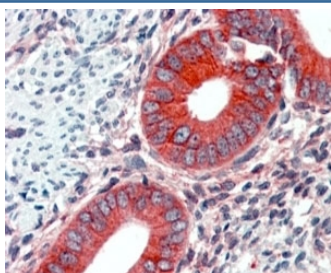


EPB41L2 Antibody (R33678)

| Catalog No. | Formulation | Size |
|--------------|---|--------|
| R33678-100UG | 0.5 mg/ml in 1X TBS, pH7.3, with 0.5% BSA (US sourced) and 0.02% sodium azide | 100 ug |

[Bulk quote request](#)

| | |
|--------------------|---|
| Availability | 1-3 business days |
| Species Reactivity | Human |
| Format | Antigen affinity purified |
| Clonality | Polyclonal (goat origin) |
| Isotype | Goat Ig |
| Purity | Antigen affinity |
| Gene ID | 2037 |
| Applications | Immunohistochemistry (FFPE) : 2-5ug/ml ELISA (peptide) LOD : 1:16000 |
| Limitations | This EPB41L2 antibody is available for research use only. |



IHC testing of FFPE human uterus with EPB41L2 at 2ug/ml. HIER: steamed with pH6 citrate buffer, AP-staining.

Description

Additional name(s) for this target protein: Erythrocyte membrane protein band 4.1-like 2

Application Notes

Optimal dilution of the EPB41L2 antibody should be determined by the researcher.

Immunogen

Amino acids DYDPEEHGSID were used as the immunogen for this EPB41L2 antibody.

Storage

Aliquot and store the EPB41L2 antibody at -20oC.