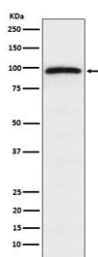


Epac1 Antibody / RAPGEF3 [clone AEOG-18] (RQ4808)

Catalog No.	Formulation	Size
RQ4808	Antibody in PBS with 0.02% sodium azide, 50% glycerol and 0.4-0.5mg/ml BSA	100 ul

[Bulk quote request](#)

Availability	1-2 weeks
Species Reactivity	Human
Format	Purified
Clonality	Rabbit Monoclonal
Isotype	Rabbit IgG
Clone Name	AEOG-18
Purity	Affinity purified
UniProt	O95398
Applications	Western Blot : 1:500-1:2000
Limitations	This Epac1 antibody is available for research use only.



Western blot testing of human HeLa cell lysate with Epac1 antibody. Predicted molecular weight ~104 kDa.

Description

The activation of RaP1 by cAMP is independent of PKA and is mediated by recently discovered family of guanine nucleotide exchange factors (GEFs) called cAMP-GEFs or Epacs. The Epac signaling therefore represents a novel mechanism for cAMP signaling with in the cAMP cascade.

Application Notes

Optimal dilution of the Epac1 antibody should be determined by the researcher.

Immunogen

A synthetic peptide specific to human Epac1 / RAPGEF3 was used as the immunogen for the Epac1 antibody.

Storage

Store the Epac1 antibody at -20oC.