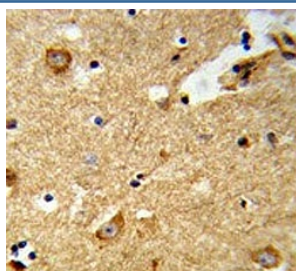


## ENTPD2 Antibody (F54471)

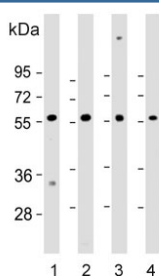
Catalog No.	Formulation	Size
F54471-0.4ML	In 1X PBS, pH 7.4, with 0.09% sodium azide	0.4 ml
F54471-0.08ML	In 1X PBS, pH 7.4, with 0.09% sodium azide	0.08 ml

[Bulk quote request](#)

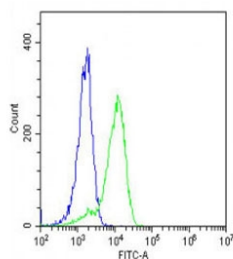
<b>Availability</b>	1-3 business days
<b>Species Reactivity</b>	Human
<b>Format</b>	Purified
<b>Clonality</b>	Polyclonal (rabbit origin)
<b>Isotype</b>	Rabbit Ig
<b>Purity</b>	Antigen affinity purified
<b>UniProt</b>	Q9Y5L3
<b>Applications</b>	Immunohistochemistry (FFPE) : 1:25 Western Blot : 1:500-1:2000 Flow Cytometry : 1:25 (1x10 <sup>6</sup> cells)
<b>Limitations</b>	This ENTPD2 antibody is available for research use only.



IHC testing of FFPE human brain tissue with ENTPD2 antibody. HIER: steam section in pH6 citrate buffer for 20 min and allow to cool prior to staining.



Western blot testing of human 1) heart, 2) HEK293, 3) U-87 MG and 4) brain lysate with ENTPD2 antibody. Predicted molecular weight ~54 kDa.



Flow cytometry testing of fixed and permeabilized human K562 cells with ENTPD2 antibody; Blue=isotype control, Green= ENTPD2 antibody.

## Description

ENTPD2 is the type 2 enzyme of the ecto-nucleoside triphosphate diphosphohydrolase family (E-NTPDase). E-NTPDases are a family of ecto-nucleosidases that hydrolyze 5'-triphosphates. This ecto-ATPase is an integral membrane protein.

## Application Notes

The stated application concentrations are suggested starting points. Titration of the ENTPD2 antibody may be required due to differences in protocols and secondary/substrate sensitivity.

## Immunogen

A portion of amino acids 86-113 from the human protein was used as the immunogen for the ENTPD2 antibody.

## Storage

Aliquot the ENTPD2 antibody and store frozen at -20oC or colder. Avoid repeated freeze-thaw cycles.