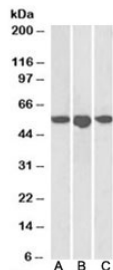


ENT1 Antibody (R36286)

Catalog No.	Formulation	Size
R36286-100UG	0.5 mg/ml in 1X TBS, pH7.3, with 0.5% BSA (US sourced) and 0.02% sodium azide	100 ug

[Bulk quote request](#)

Availability	1-3 business days
Species Reactivity	Human
Predicted Reactivity	Cow, Dog, Mouse, Rat
Format	Antigen affinity purified
Host	Goat
Clonality	Polyclonal (goat origin)
Isotype	Goat Ig
Purity	Antigen affinity
Gene ID	2030
Applications	Western Blot : 1-3ug/ml ELISA (peptide) LOD : 1:4000
Limitations	This ENT1 antibody is available for research use only.



Western blot testing of human breast [A], placenta [B] and spleen [C] lysates with ENT1 antibody at 1ug/ml. Predicted molecular weight: ~50kDa.

Description

Additional name(s) for this target protein: Equilibrative nucleoside transporter 1; solute carrier family 29 (nucleoside transporters), member 1; SLC29A1

Application Notes

Optimal dilution of the ENT1 antibody should be determined by the researcher.

Immunogen

Amino acids TSHQPQDRYKAVW were used as the immunogen for this ENT1 antibody.

Storage

Aliquot and store the ENT1 antibody at -20°C.