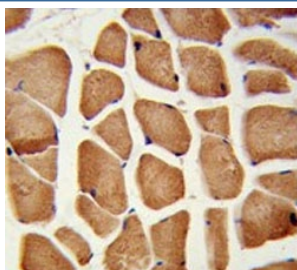


Enoyl-CoA delta isomerase 2 Antibody / ECI2 / PEGI (F54992)

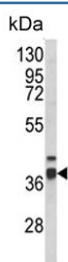
Catalog No.	Formulation	Size
F54992-0.4ML	In 1X PBS, pH 7.4, with 0.09% sodium azide	0.4 ml
F54992-0.08ML	In 1X PBS, pH 7.4, with 0.09% sodium azide	0.08 ml

[Bulk quote request](#)

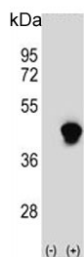
Availability	1-3 business days
Species Reactivity	Human
Format	Purified
Clonality	Polyclonal (rabbit origin)
Isotype	Rabbit Ig
Purity	Antigen affinity purified
UniProt	O75521
Localization	Cytoplasmic
Applications	Western Blot : 1:500-1:1000 Flow Cytometry : 1:10-1:50 (1x10e6 cells) Immunohistochemistry (FFPE) : 1:50-1:100
Limitations	This Enoyl-CoA delta isomerase 2 antibody is available for research use only.



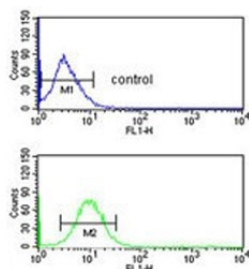
IHC testing of FFPE human skeletal muscle tissue with Enoyl-CoA delta isomerase 2 antibody. HIER: steam section in pH6 citrate buffer for 20 min and allow to cool prior to staining.



Western blot testing of human HepG2 cell lysate with Enoyl-CoA delta isomerase 2 antibody. Predicted molecular weight ~44 kDa.



Western blot testing of 1) non-transfected and 2) transfected 293 cell lysate with Enoyl-CoA delta isomerase 2 antibody.



Flow cytometry testing of human HepG2 cells with Enoyl-CoA delta isomerase 2 antibody; Blue=isotype control, Green= Enoyl-CoA delta isomerase 2 antibody.

Description

Enoyl-CoA delta isomerase 2 / PECL is an auxiliary enzyme that catalyzes an isomerization step required for the beta-oxidation of unsaturated fatty acids.

Application Notes

The stated application concentrations are suggested starting points. Titration of the Enoyl-CoA delta isomerase 2 antibody may be required due to differences in protocols and secondary/substrate sensitivity.

Immunogen

A portion of amino acids 331-358 from the human protein was used as the immunogen for the Enoyl-CoA delta isomerase 2 antibody.

Storage

Aliquot the Enoyl-CoA delta isomerase 2 antibody and store frozen at -20oC or colder. Avoid repeated freeze-thaw cycles.