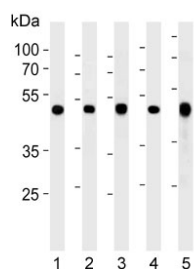


## ENO1 Antibody / Enolase 1 / Alpha Enolase (F54858)

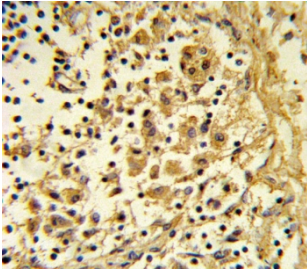
Catalog No.	Formulation	Size
F54858-0.4ML	In 1X PBS, pH 7.4, with 0.09% sodium azide	0.4 ml
F54858-0.08ML	In 1X PBS, pH 7.4, with 0.09% sodium azide	0.08 ml

[Bulk quote request](#)

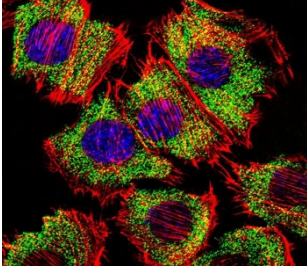
<b>Availability</b>	1-3 business days
<b>Species Reactivity</b>	Human, Mouse
<b>Format</b>	Purified
<b>Host</b>	Rabbit
<b>Clonality</b>	Polyclonal (rabbit origin)
<b>Isotype</b>	Rabbit Ig
<b>Purity</b>	Purified
<b>UniProt</b>	P06733
<b>Localization</b>	Cytoplasmic, nuclear
<b>Applications</b>	Western Blot : 1:500-1:1000 Immunofluorescence : 1:10-1:50 Immunohistochemistry (FFPE) : 1:10-1:50 Flow Cytometry : 1:10-1:50 (1x10 <sup>6</sup> cells)
<b>Limitations</b>	This ENO1 antibody is available for research use only.



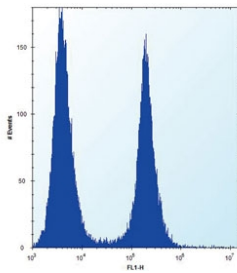
Western blot testing of 1) human Jurkat, 2) human MCF7, 3) human U-251, 4) mouse NIH 3T3 and 5) mouse brain lysate with ENO1 antibody. Predicted molecular weight ~47 kDa.



IHC testing of FFPE human lymph tissue with ENO1 antibody. HIER: steam section in pH6 citrate buffer for 20 min and allow to cool prior to staining.



Immunofluorescent staining of fixed and permeabilized mouse C2C12 cells with ENO1 antibody (green), DAPI nuclear stain (blue) and anti-Actin (red).



Flow cytometry testing of human HeLa cells with ENO1 antibody; Left=isotype control, Right= ENO1 antibody.

## Description

ENO1 is one of three enolase isoenzymes found in mammals; it is alpha-enolase, a homodimeric soluble enzyme, and also a shorter monomeric structural lens protein, tau-crystallin. The two proteins are made from the same message. The full length protein, the isoenzyme, is found in the cytoplasm. The shorter protein is produced from an alternative translation start, is localized to the nucleus, and has been found to bind to an element in the c-myc promoter.

## Application Notes

The stated application concentrations are suggested starting points. Titration of the ENO1 antibody may be required due to differences in protocols and secondary/substrate sensitivity.

## Immunogen

A portion of amino acids 178-205 from the human protein was used as the immunogen for the ENO1 antibody.

## Storage

Aliquot the ENO1 antibody and store frozen at -20oC or colder. Avoid repeated freeze-thaw cycles.

