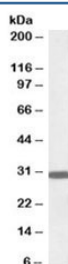


Engrailed-2 Antibody (R34821)

Catalog No.	Formulation	Size
R34821-100UG	0.5 mg/ml in 1X TBS, pH7.3, with 0.5% BSA (US sourced) and 0.02% sodium azide	100 ug

[Bulk quote request](#)

Availability	1-3 business days
Species Reactivity	Mouse, Rat
Predicted Reactivity	Dog, Human
Format	Antigen affinity purified
Clonality	Polyclonal (goat origin)
Isotype	Goat Ig
Purity	Antigen affinity
Gene ID	2020
Applications	Western Blot : 0.1-0.3ug/ml ELISA (peptide) LOD : 1:4000
Limitations	This Engrailed-2 antibody is available for research use only.



Western blot testing of rat brain lysate with Engrailed-2 antibody at 0.1ug/ml. Predicted molecular weight: ~34kDa.

Description

Additional name(s) for this target protein: AUTS1; EN2

Application Notes

Optimal dilution of the Engrailed-2 antibody should be determined by the researcher.

Immunogen

Amino acids NHSTTAKEGKSDSE were used as the immunogen for this Engrailed-2 antibody.

Storage

Aliquot and store the Engrailed-2 antibody at -20oC.